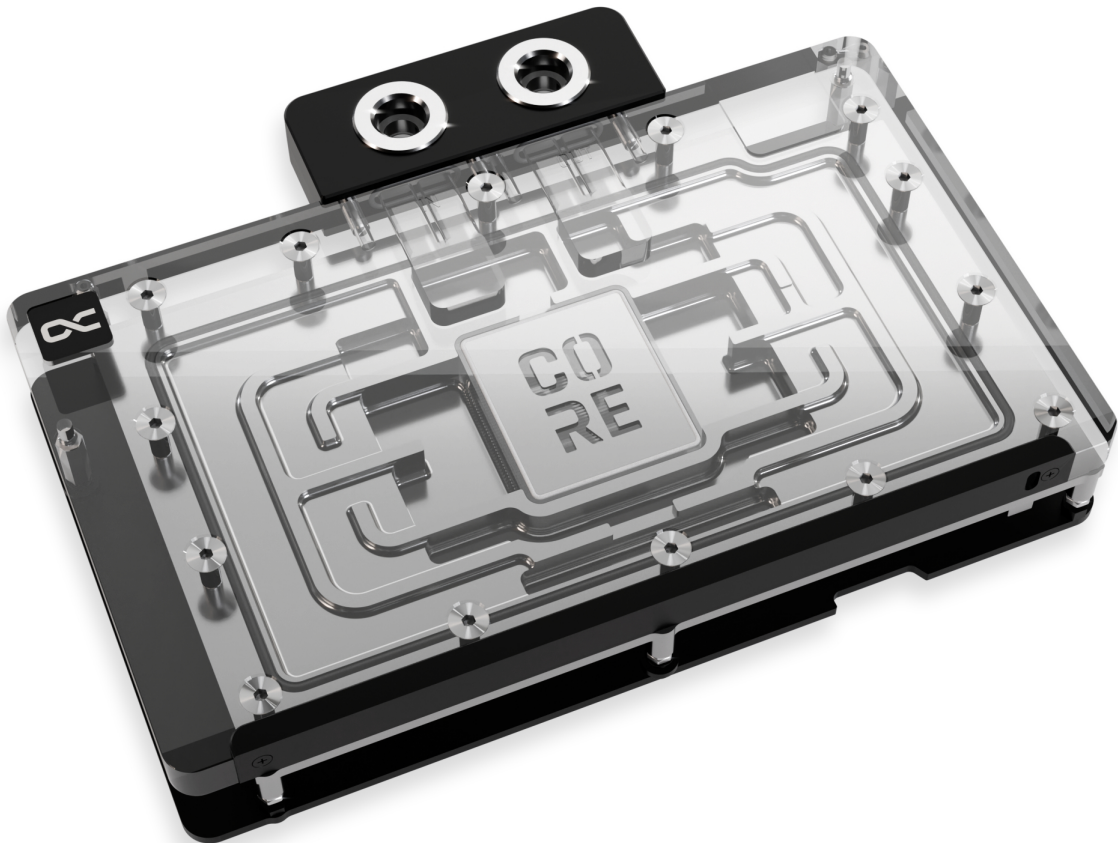


Alphacool Core Geforce RTX 5090 Reference with backplate

Alphacool article number: 10242



Quick Info

Alphacool introduces its new series of graphics card water coolers for the latest Nvidia GeForce RTX generation. Part of the Core product series, these coolers combine the highest quality with exceptional performance. Thanks to an optimized technical design, these GPU coolers deliver outstanding cooling performance.

- Optimized water flow through software and practical measurements
- Massive brass threads for secure fastening
- Superior chrome plating instead of nickel plating on the copper cooler
- Core design for maximum quality and feel

Compatibility

- Inno3D GeForce RTX™ 5090 iChill Frostbite (C50903-32D7X-1759FB)
- Inno3D GeForce RTX™ 5090 iChill X3 (C50903-32D7X-175967H)
- Inno3D GeForce RTX™ 5090 X3 (N50903-32D7-17593928)
- Inno3D GeForce RTX™ 5090 X3 OC (N50903-32D7X-17593928)
- MSI GeForce RTX™ 5090 32G VENTUS 3X OC (MS-V530 VER:1.1)

Scope of delivery

| | |
|---|------------------------|
| 1x Core Geforce RTX 5090 Reference cooler | 1x Thermal Grease |
| 1x Backplate | 1x Putty tool |
| 2x 68x15x1mm Pad | 1x ARGB Adapter |
| 1x 54x15x1mm Pad | 1x PCIe Bracket |
| 4x 8x8x1mm Pad | 1x Plug tool |
| 2x 12x15x1mm Pad | 1x Screwdriver |
| 1x 91,5x8x1mm Pad | 2x G1/4" Plug |
| 1x 101x8x1mm Pad | 6x M2x10mm screws |
| 2x 68x8x3mm Pad | 1x M2x5mm spring screw |
| 1x 45x45x3mm Pad | 1x washer |
| 1x 20x8x3mm Pad | 1x M2x5mm screw |

Technical data cooler

| | |
|-----------------------------------|---------------------------|
| Dimensions total (L x W x H) | 201,40 x 148,57 x 34,38mm |
| Material cooler | chrome-plated copper |
| Material cooler top | Acrylic |
| Material terminal | Acetal |
| Material Connection thread | Brass |
| Max working temperature | 60°C |
| Pressure tested | 0,8 bar |
| Threads | 4 x G1/4" |
| Thickness cooler bottom | 3,25mm |
| Thickness cooling fins | 0,4mm |
| Distance cooling fins | 0,4mm |
| Illumination | digital aRGB LEDs |
| Power connector digital aRGB LEDs | 3-Pin JST |
| Power digital aRGB LEDs | 5V |
| Number of digital aRGB LEDs | 9 |
| Color | transparent |

Technical data backplate

| | |
|---------------------------------|--------------------|
| Dimensions (L x W x H) | 201,40 x 120 x 6mm |
| Thick backplate without spacers | 3mm |
| Material | Aluminium |

Download links

| | |
|------------------|---|
| Manual | 10242_Alphacool_Core_Geforce_RTX_5090_Reference_with_backplate_Manual.pdf |
| Product pictures | 10242_Alphacool_Core_Geforce_RTX_5090_Reference_with_backplate_pics.zip |

Packaging dimensions per unit

| | |
|-----------|-------------------|
| L x W x H | 350 x 205 x 60 mm |
| Weight | 1700 g |

Other data

| | |
|--------------|---------------|
| Certificates | CE, FC, RoHS |
| EAN | 4250197102421 |
| Customs code | 84195080900 |
| Guarantee | 3 years |

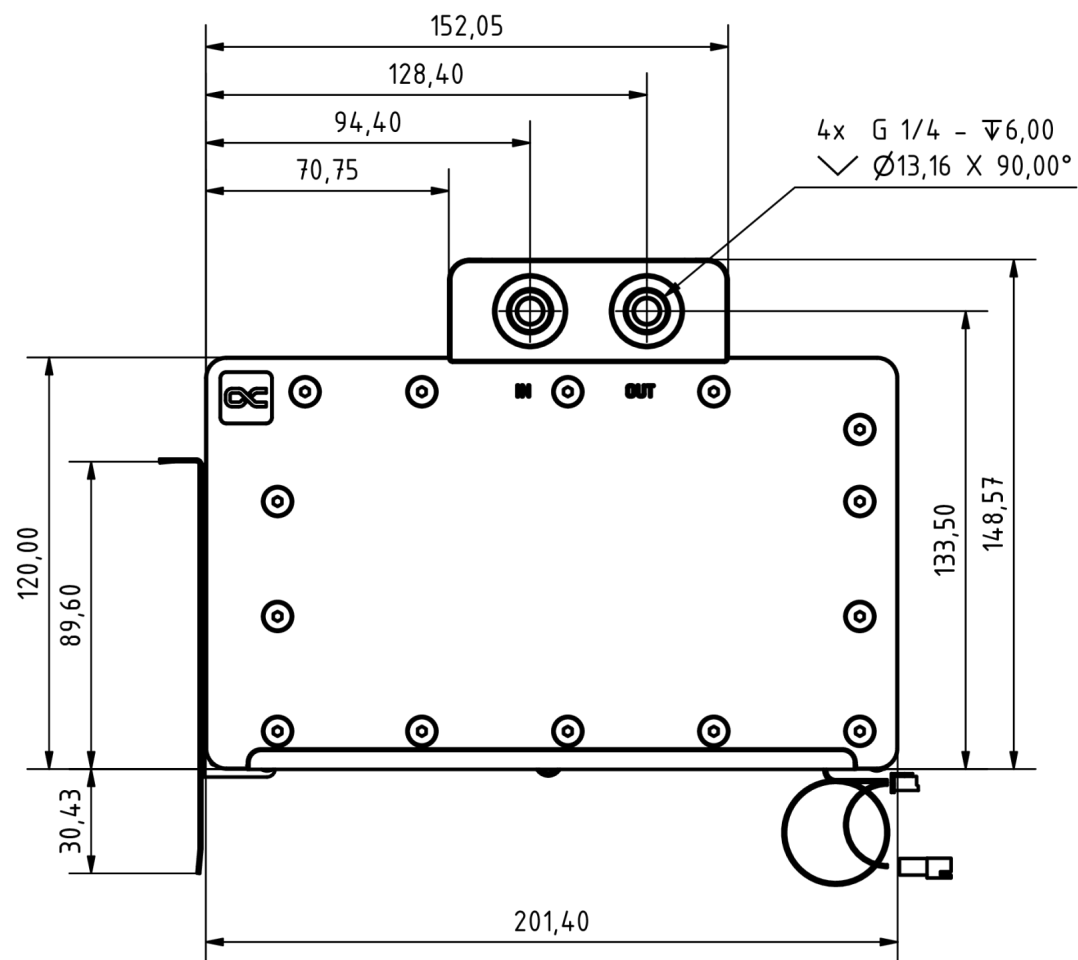
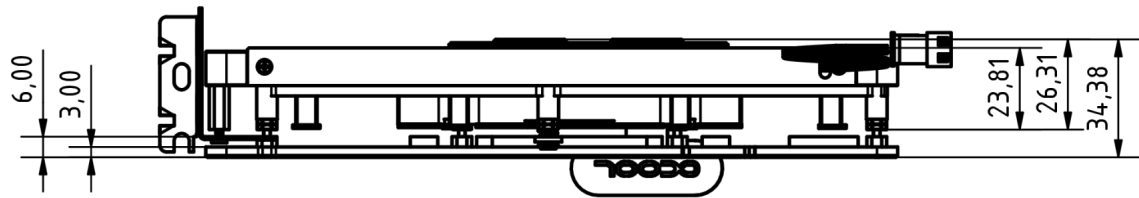
Article text

Alphacool introduces its new series of graphics card water coolers for the latest Nvidia GeForce RTX generation. Part of the Core product series, these coolers combine the highest quality with exceptional performance. Thanks to an optimized technical design, these GPU coolers deliver outstanding cooling performance.

At the heart of the cooler is a copper block, precisely milled from a single piece and complemented by a precisely crafted brass terminal with a nylon cover. A chrome finish enhances the copper cooler's durability and provides a smoother, more radiant surface than traditional nickel plating.

The visual design of the GPU water cooler has been slightly modified. A new highlight is the Core emblem placed above the jetplate, which emphasizes its affiliation with the Core series and visually enhances the design. The series continues to feature high-quality brass connectors that ensure optimal quality and safety. The specially adapted aluminum backplate covers the entire backside of the copper cooler, ensuring a clear and uniform appearance. The acrylic, combined with aRGB lighting, allows for even and impressive illumination of the entire cooler.

The GPU water cooler has been completely overhauled technically. To optimize cooling performance, the distances between the cooler and the components of the PCB were redefined and tested. The water flow was simulated using the most advanced software and verified through practical tests. These extensive tests allowed for improvements to the cooler base and jetplate, ensuring the best possible cooling performance for the new Nvidia GeForce RTX generation.



General tolerance: $\pm 0,25\text{mm}$
 Thickness with graphics card (PCB)
 Dimension in millimeter