

PERFORMANCE

Processor^[1]

Intel® Core™ i3-1215U, 6C (2P + 4E) / 8T, P-core 1.2 / 4.4GHz, E-core 0.9 / 3.3GHz, 10MB

Graphics^[2]

Integrated Intel® UHD Graphics

Chipset

Intel® SoC Platform

Memory

1x 8GB SO-DIMM DDR4-3200

Memory Slots

Two DDR4 SO-DIMM slots, dual-channel capable

Max Memory^[3]

Up to 16GB DDR4-3200

Storage

512GB SSD M.2 2280 PCIe® 3.0x4 NVMe®

Optane™ Memory

None

Storage Support^{[4][5]}

Up to two drives, 1x 2.5" HDD + 1x M.2 SSD

- 2.5" HDD up to 1TB
- M.2 SSD up to 1TB

Card Reader

None

Optical

None

Audio Chip

High Definition (HD) Audio, Realtek® ALC256 codec

Speakers

3Wx2

Camera

HD 720p

Microphone

2x, Array

Power Supply

90W 89% Adapter

DESIGN

Display^[6]

23.8" FHD (1920x1080) IPS 250nits Anti-glare

Touchscreen

None

Keyboard

Calliope Wireless Keyboard, White, Russian

Mouse

Calliope Wireless Mouse, White

Expansion Slots

Two M.2 slots (one for WLAN, one for SSD)

Case Color

White

Stand

AIO Stand

Pen

Pen Not Supported

Form Factor

AIO (23.8 inches)

Dimensions (WxDxH)^[7]

541.2 x 185.34 x 433.96 mm (21.3 x 7.29 x 17.08 inches)

Weight^[8]

7.03 kg (15.49 lbs)

CONNECTIVITY

Ethernet

Integrated 100/1000M

WLAN + Bluetooth®

Wi-Fi® 5, 802.11ac 2x2 + BT5.1

WWAN

Non-WWAN

Rear Ports

- 2x USB 2.0
- 2x USB 3.2 Gen 2
- 1x HDMI® 1.4
- 1x Ethernet (RJ-45)
- 1x power connector

SECURITY & PRIVACY

Security Chip

Firmware TPM 2.0 integrated in SoC

Physical Locks

No physical locks

SERVICE

Base Warranty

1-year, Courier or Carry-in

Included Upgrade

None

CERTIFICATIONS

Green Certifications

- ErP Lot 3/7
- RoHS compliant

SOFTWARE

Operating System

None

Bundled Software

None

MODEL

TopSeller	: Yes	Announce Date	: 2023-09-22
EAN / UPC / JAN	: 197531112590	End of Support	: 2028-02-21



intel

Product image is a sample, it may not match the real color of this model

Note:

[1] Intel Max Turbo frequency will vary depending on application workload and the hardware and software configurations, see <http://www.intel.com/technology/turboboost/> for more information.

[2] Intel Iris Xe Graphics capability requires system to be configured with dual-channel memory. On the system with single-channel memory, Intel Iris Xe Graphics will function as Intel UHD Graphics.

[3] The max memory is based on the test results with current Lenovo memory offerings.

[4] The max capacity of each disk type is based on the test results with current Lenovo storage offerings.

[5] 2.5" HDD bracket kit only comes with pre-configured HDD models.

[6] IPS (in-plane switching) technology may refer to IPS, PLS, ADS, AHVA, AAS.

[7] The system dimensions may vary depending on configurations.

[8] The system weight is approximate and based on results in Lenovo lab, which varies depending on the source of component, variance of the distribution of each component, and manufacturing process. It may not be the exact weight for each specific model.

· Lenovo reserves the right to change specifications without notice.

To see more note information, please link to

<https://psref.lenovo.com/Detail/1812?M=F0GH01A3RK>

Premium Care - Advanced Support from Real People. Real Fast.



REAL PERSON

Choose how you want to reach us - through the phone, chat or email - our expert technicians will take care of you.



REAL FAST

Highly trained technicians will provide you real-time solutions, whatever the issue, on your first contact. If needed, our team will schedule an onsite visit for the next business day.



HASSLE FREE

'Getting started' and 'how-to' assistance for hardware and software. Easy solutions that are simple to reach - that's how Premium Care delivers you the ideal support experience.



PC HEALTH CHECK

Free annual PC Health Check that allows our experts to spot issues before you do so they can resolve them quickly and help you avoid PC problems.

Accidental Damage Protection - Protection of your PC from the unexpected.

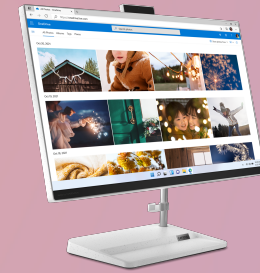
Experience shows that a significant portion of devices may be damaged (and not covered under warranty) in the first three years. Lenovo's Accidental Damage Protection service covers accidents beyond the system warranty such as drops, spills, bumps and even electrical surges. Make sure your new device has maximum protection, avoid unplanned costs and get peace of mind.

Base Warranty – Included with the systems you purchase, default 1- or 3-year coverage window.

Warranty Extensions & Upgrades – Service and protection that's right for your circumstances.

- Pick Up & Return Courier
- Onsite Support
- Technician Installed Customer
- Replaceable Unit Service
- International Warranty Upgrade

Lenovo may not offer the products, services or features discussed in this document in all regions. Lenovo may withdraw an offering at any time. Consult your local representative for information on offerings available in your area. Lenovo reserves the right to change specifications or other product information without notice. Lenovo is not responsible for photographic or typographical errors. Lenovo provides this publication "as is" without warranty of any kind, either express or implied, including the implied warranties of merchantability or fitness for a particular purpose.



intel



intel

Recommended Services

BEST	4Y Premium Care with Onsite upgrade from 1Y Courier/Carry-in (5WSOW36567)
GOOD	3Y Onsite upgrade from 1Y Courier/Carry-in (5WSOK78516)

For a full list of accessories and services, please visit:

<https://smartfind.Lenovo.com>

Lenovo

PSREF
Product Specifications
Reference