

ECAM29X.2Y - 29X.3Y - 29X.4Y - FEB292X - 293X - 294X

MAGNIFICA — EVO —

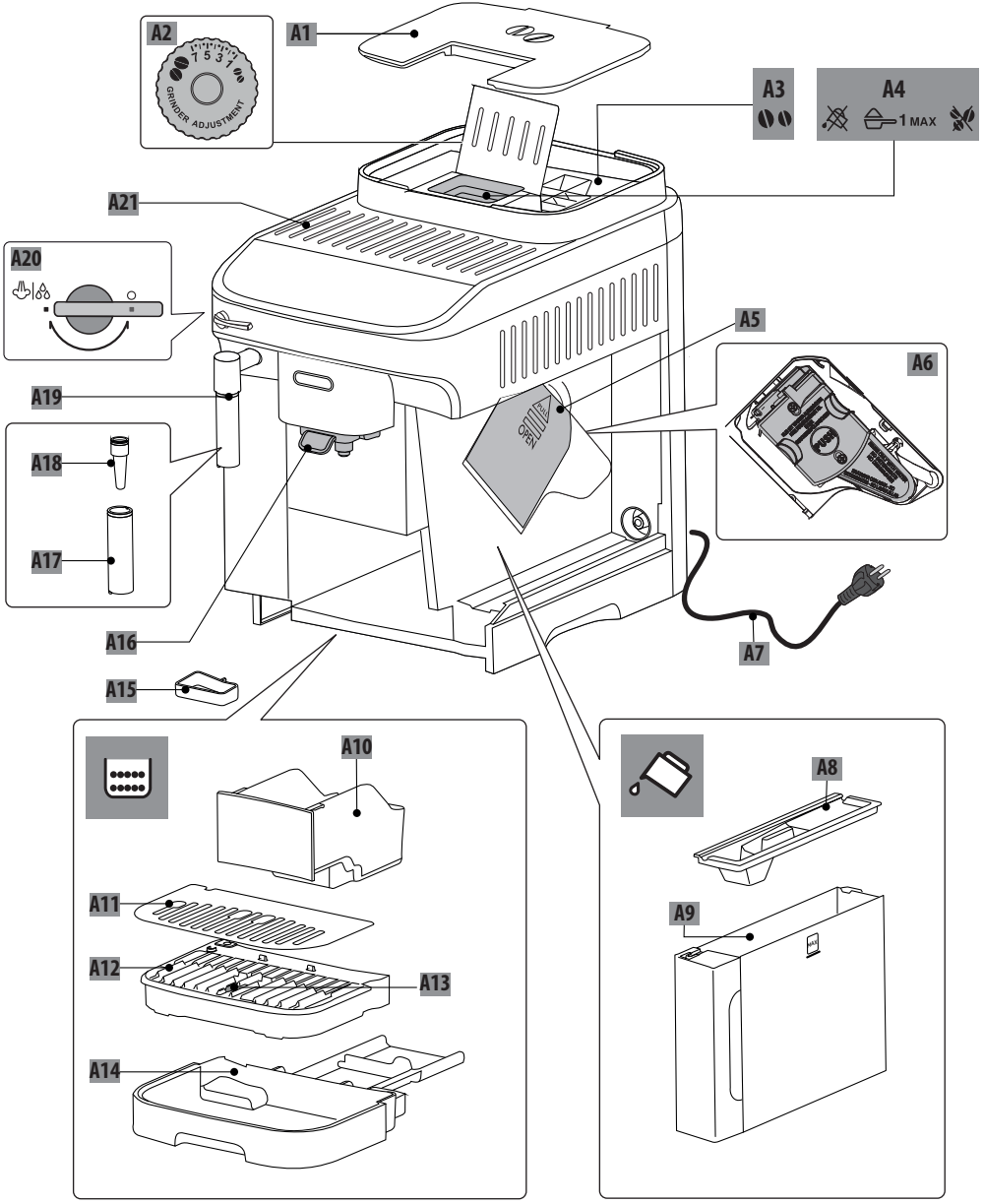
BEAN TO CUP ESPRESSO AND
CAPPUCCINO MACHINE

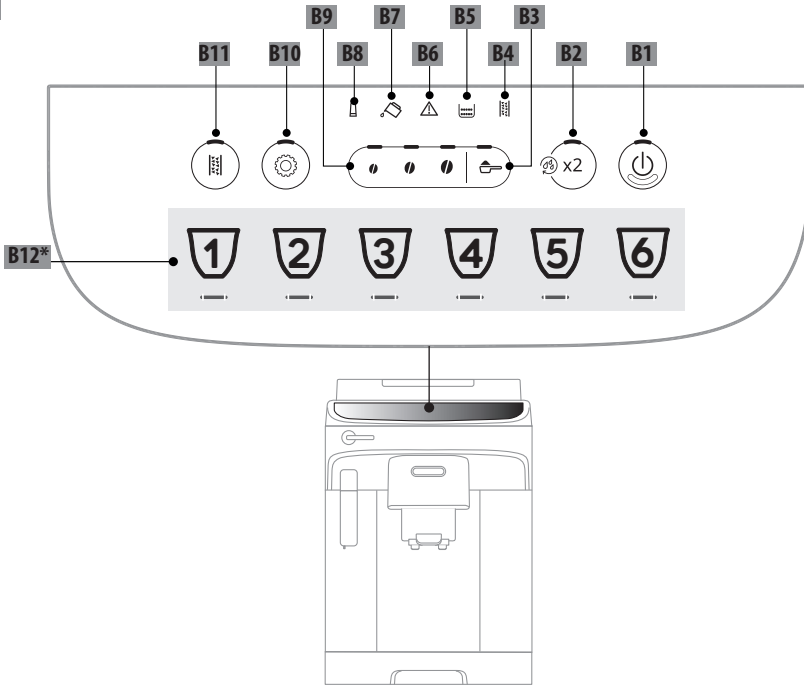
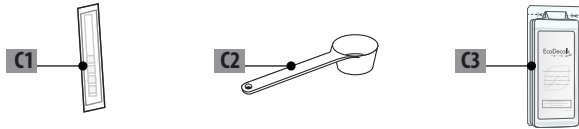
Instructions for use



DeLonghi

A



B**C***

	×	×	×	✓	✓
	✓	✓	✓	✓	✓

CONTENTS





1. INTRODUCTION	5
1.1 Letters in brackets.....	5
1.2 Troubleshooting and repairs.....	5
2. DESCRIPTION	5
2.1 Description of the appliance - A	5
2.2 Description of control panel - B	5
2.3 Description of accessories - C*	5
3. SETTING UP THE APPLIANCE	5
4. MEASURING WATER HARDNESS	6
5. TURNING THE MACHINE ON	7
6. TURNING THE MACHINE OFF	7
7. MAKING COFFEE DRINKS	7
7.1 Making coffee using coffee beans	7
7.2 Making 2 cups of coffee	8
7.3 Making coffee using pre-ground coffee ..	8
7.4 General indications for making coffee-based drinks	8
7.5 Varying the intensity of the coffee	8
7.6 Rinsing	8
7.7 Tips for a hotter coffee.....	9
7.8 Adjusting the coffee grinder.....	9
7.9 Preparing an "Over ice".....	9
7.10 Customising the quantity in the cup.....	9
8. MAKING CAPPUCCINO	9
8.1 What milk to use	9
8.2 Making cappuccino	9
8.3 Clean the steam/hot water spout after use	10
9. DELIVERING HOT WATER	10
10. WATER SOFTENER FILTER	11
10.1 Replacing the filter.....	11
10.2 Removing the filter	11
11. TIPS FOR ENERGY SAVING	12
12. SETTINGS MENU	12
12.1 Reset to default values.....	14
13. CLEANING THE MACHINE	15
14. CLEANING THE BREWING UNIT	16
15. DESCALING	16
16. EXPLANATION OF LIGHTS	18
17. TROUBLESHOOTING	19
18. TECHNICAL DATA	21

Before using the machine for the first time, be sure to read the safety warnings.

1. INTRODUCTION

Take a few minutes to read these Instructions for Use. This way, you will avoid causing danger and damage to the machine.

The Leds and indicator lights on the panel will help in ensuring correct interaction with the machine:

	Off	--
	Permanently alight	Function available
	Blinking	Function progress in
	Blinking rapidly	User action required

The same symbols are also used in the Quick Guide provided with the product.

1.1 Letters in brackets

The letters in brackets refer to the description of the appliance on pages 2-3.

1.2 Troubleshooting and repairs

In the event of problems, first try and resolve them by reading the information given in sections "16. Explanation of lights" and "17. Troubleshooting".

If this does not resolve the problem or further information is required, consult the customer services department by calling the number given on the "Customer Service" sheet attached.

If your country is not among those listed on the sheet, call the number given in the guarantee. If repairs are required, contact De'Longhi customer services only. The addresses are given in the guarantee certificate provided with the machine.

2. DESCRIPTION

2.1 Description of the appliance - A

- A1. Beans container lid
- A2. Coffee grinder adjustment dial
- A3. Bean hopper
- A4. Pre-ground coffee funnel
- A5. Brewing unit flap
- A6. Removable brewing unit
- A7. Power cord
- A8. Water tank lid

- A9. Water tank
- A10. Coffee grounds container
- A11. Cup grille
- A12. Drip tray grille
- A13. Drip tray water level indicator
- A14. Drip tray
- A15. Condensate tray
- A16. Height-adjustable coffee spout
- A17. Cappuccino maker (removable)
- A18. Steam/Hot water connection nozzle (removable)
- A19. Steam/Hot water spout
- A20. Steam/Hot water dial
- A21. Cup shelf

2.2 Description of control panel - B

- B1. ON/standby button with built-in Led
- B2. X2 button with built-in Led (if pressed and held for 5 seconds, activates rinsing of the coffee circuit)
- B3. Pre-ground coffee selector with built-in Led
- B4. Indicator permanently alight: machine must be descaled
Indicator blinking: descaling in progress
- B5. Indicator permanently alight: grounds container (A10) needs emptying
Indicator blinking: grounds container not in position
- B6. General alarm indicator
- B7. Indicator permanently alight: insufficient water in the tank (A9)
Indicator blinking: tank not in position
- B8. Indicator permanently alight: filter must be replaced
Indicator blinking: filter installation in progress
- B9. Intensity selector with built-in Led: mild, medium, strong
- B10. Settings menu button with built-in Led
- B11. Descale button with built-in Led
- B12. Direct selection of drinks (*number and type differ according to model)

2.3 Description of accessories - C*

(number and type differ according to model)

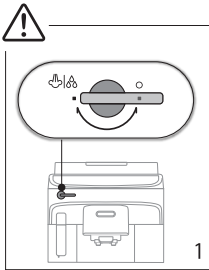
- C1. "Total Hardness Test" strip
- C2. Pre-ground coffee scoop
- C3. Descaler

3. SETTING UP THE APPLIANCE

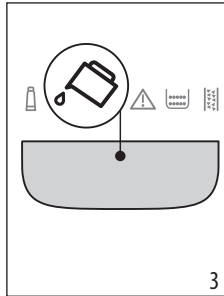
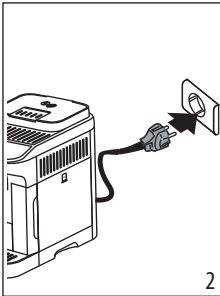
Please note:


- When using the machine for the first time, all removable accessories making contact with water or milk should be rinsed with hot water.
- Any traces of coffee that may be found in the grinder are left by the factory tests carried out on the machine before it goes on sale — evidence of the meticulous care we have for the product.

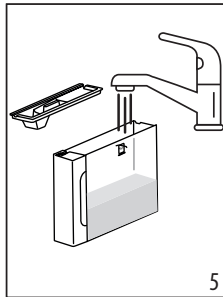
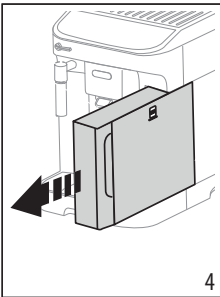
- The first time the machine is used, the water circuit will be empty and operation could be very noisy. The noise becomes less as the circuit fills.
- Make sure the steam/hot water dial (A20) remains in the 0 position until the first start-up has been completed (fig. 1).





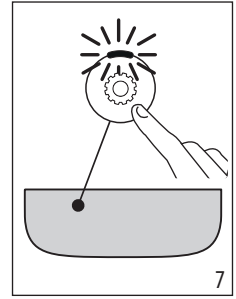
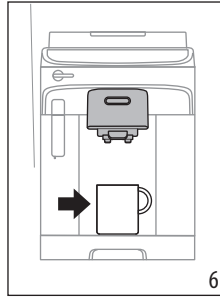
1. Connect the machine to the mains supply (fig. 2).



2. The indicator  (B7) will light up on the control panel (B) (fig. 3); remove the water tank (A9) (fig. 4), fill up to the MAX level with fresh water (fig. 5), then return the tank to the machine.



3. The Led  (B10) on the control panel will blink rapidly.
4. Position a container under the coffee spout (A16) (fig. 6).
5. Press the  button (B10) (fig. 7): the internal water circuits start to fill and the appliance will release hot water from the coffee spout.




The machine is now ready for use.

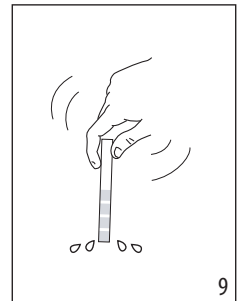
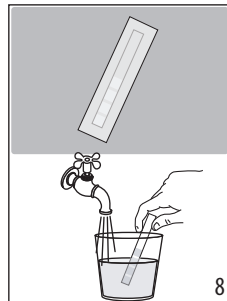
Please note:

- When using the machine for the first time, 4-5 coffees will need to be made before it starts giving satisfactory results.
- When rinsing the steam circuit, it is best to release hot water for a few seconds by turning the steam/hot water dial (A20) to the I position.

4. MEASURING WATER HARDNESS

Setting the water hardness as soon as possible will enable the machine to optimize the frequency of descaling. This means that the descale indicator  (B4) will light up as necessary according to the actual hardness of the local water supply. Proceed as follows:

1. If a total hardness test strip (C1) is supplied with the model of machine in question, remove it from its wrapper.
2. Immerse the strip completely in a glass of water for about one second (fig. 8).



3. Remove the strip from the water and shake lightly (fig. 9). After about a minute, 1, 2, 3, or 4 red squares appear, depending on the hardness of the water. Each square corresponds to one level.

Total Hardness Test	Hardness
	1 Low

	2 Medium
	3 Medium/High
	4 High

See instructions in section "12. Settings menu" to set the machine accordingly.

5. TURNING THE MACHINE ON

Please note:

Make sure that the steam/hot water dial (A20) is closed, in the 0 position (fig. 1).

Danger of scalding!

During the rinse, a little hot water flows from the coffee spouts (A16). Take care to avoid contact with splashes of water. To avoid the need for frequent emptying of the drip tray (A14), place a container under the spouts to collect the rinse water.

- To switch on the machine, press the button (B1): the Led of the on/off button lights up and the drinks Leds blink on the control panel (B) to indicate that the machine is warming up.

During this step, the machine performs a rinse cycle. Besides heating up the boiler, this also serves to circulate hot water through the internal circuits so they too are brought up to temperature.

The machine is ready for use when the drinks and intensity Leds remain permanently alight.

6. TURNING THE MACHINE OFF

Whenever the machine is turned off after being used to make coffee, it performs an automatic rinse cycle.

Danger of scalding!

During the rinse, a little hot water flows from the coffee spouts (A16). Take care to avoid contact with splashes of water. To avoid the need for frequent emptying of the drip tray (A14), place a container under the spouts to collect the rinse water.

- To switch the appliance off, press the button (B1);
- the drinks indicator Leds on the control panel will now blink: the appliance performs a rinse cycle, if envisaged, and then switches off (stand-by).

Please note:

If the appliance is not going to be used for some time, unplug it from the mains socket:

- first, turn off the appliance by pressing the button;
- unplug the power cord from the socket.

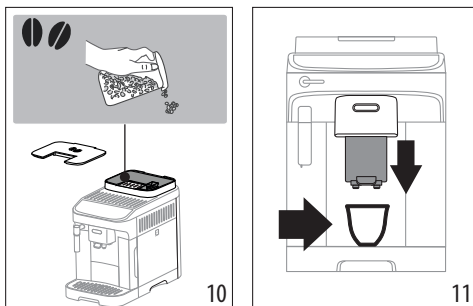
7. MAKING COFFEE DRINKS

7.1 Making coffee using coffee beans

Important!

Do not use green, caramelized or candied coffee beans as they could stick to the coffee grinder and render it unusable.

- Fill the container (A3) with coffee beans (fig. 10);



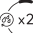

- Place a cup under the coffee spouts (A16) (fig. 11);
- Lower the spouts as near as possible to the cup: this makes a creamier coffee (fig. 11);
- Select the required drink:

Drink (*)	Default quantity (ml)	Programmable quantity (ml)
Espresso	≈ 40	from ≈ 20 to ≈ 80
Coffee	≈ 180	from ≈ 100 to ≈ 240
Long	≈ 160	from ≈ 115 to ≈ 250
Americano	Espresso: ≈ 40 Water: ≈ 110	Espresso: from ≈ 20 to ≈ 180 Water: from ≈ 50 to ≈ 300
Doppio+	≈ 120	from ≈ 80 to ≈ 180
Over ice	100	from ≈ 40 to ≈ 240

(*) Different numbers and types of drinks, according to model.

- Preparation begins and the Led corresponding to the selection blinks on the control panel (B).

7.2 Making 2 cups of coffee

1. Place the cups under the coffee spouts (A16);
2. Lower the spouts as near as possible to the cups: this makes a creamier coffee;
3. Press the  button (B2): the corresponding Led lights up;
4. Press  Espresso (B12);
5. Preparation begins and the Led corresponding to the Espresso button blinks on the control panel (B).

7.3 Making coffee using pre-ground coffee

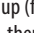
Important!

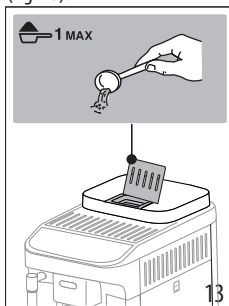
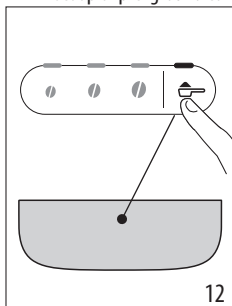
- Never add pre-ground coffee when the machine is off, or it could spread through and soil the inside of the machine. This could cause damage to the machine.
- Never use more than 1 level scoop (C2), as this could soil the inside of the machine or block the funnel (A4).



Please note:





When using pre-ground coffee, only one cup can be made at a time.

1. Press  (B3): the relative Led lights up (fig. 12).
2. Make sure the funnel is not blocked, then add one level scoop of pre-ground coffee (fig. 13).



3. Place a cup under the coffee spouts (A16) (fig. 11);
4. Select the required drink (B12);
5. Preparation begins and the Led corresponding to the selection blinks on the control panel (B).

Important!

- Making  Long coffee: halfway through preparation, when the  +  indicators light up, add one level scoop of pre-ground coffee and press the Long button again.
- It is not possible to make a  Doppio+ coffee using pre-ground coffee.

7.4 General indications for making coffee-based drinks




- Indicator lights may appear on the control panel (B) during use. Their meaning is given in section "16. Explanation of lights".
- To make a hotter coffee, see section "7.7 Tips for a hotter coffee".
- If the coffee is delivered a drop at a time, too weak and not creamy enough or too cold, read the tips in section "17. Troubleshooting".
- To customise drinks according to personal taste, see sections "7.5 Varying the intensity of the coffee" and "7.10 Customising the quantity in the cup".

Please note:

In energy saving mode, a few seconds may elapse before the first coffee is delivered as the machine must heat up again.

7.5 Varying the intensity of the coffee

1. Press the button corresponding to the preferred intensity:

	Mild
	Medium
	Strong


2. Select the desired coffee drink.

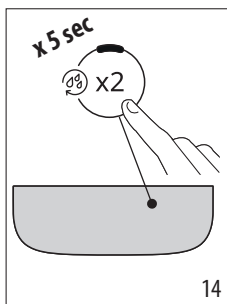
Please note:

- When the next coffee is made, the machine will show the last intensity setting selected.
- In the event of power failure, the machine will revert to the default setting: medium.

7.6 Rinsing

Using this function, hot water can be delivered from the coffee spouts to clean and heat the internal circuit of the machine.

1. Place a container of at least 100ml capacity under the coffee spouts (A16) (fig. 6).
2. Press the  button (B2) and hold for about 5 seconds (fig. 14): the cycle will start and stop automatically (to terminate the cycle sooner, press the same button a second time).



Please note:

- If the appliance is not used for more than 3-4 days it is highly advisable, when switching on again, to run 2/3 rinse cycles before preparing any drinks;
- It is normal for the grounds container (A10) to contain water following a rinse cycle.

7.7 Tips for a hotter coffee

To make a hotter coffee, proceed as follows:

- run a rinse cycle (see section "7.6 Rinsing");
- warm the cups by rinsing them first using the hot water function;
- increase the coffee temperature (see section "12. Settings menu").


7.8 Adjusting the coffee grinder


The coffee grinder does not require any adjustment, at least initially, as it has been factory set to ensure that coffee is prepared correctly.

Please note:


The adjuster ring must be turned only when the coffee grinder is in operation during the initial step of coffee preparation.

To make an adjustment while the coffee grinder is in operation, turn the dial (A2) as follows:

<p>If the coffee is delivered too slowly, or not at all. The effect of this adjustment will not be noticeable until at least 2 further coffees have been made.</p>	<p>Turn one click toward number "7"</p> 
--	---

<p>For a fuller bodied and creamier coffee The effect of this adjustment will not be noticeable until at least 2 further coffees have been made.</p>	<p>Turn one click toward number "1"</p> 
--	--

7.9 Preparing an "Over ice"

1. Position a glass containing 3 ice cubes under the coffee spout (A16);
2. Press  Over ice: the Leds of the intensity buttons will blink;
3. Select the desired intensity (B9) (selection of "strong" is recommended): preparation starts, and will stop automatically when done.
4. Add 3 more ice cubes, and sweeten to taste.

Important:

Use glasses capable of withstanding thermal shock.

7.10 Customising the quantity in the cup

1. Press the button relative to the drink being programmed and hold for a few seconds: the programming menu is accessed when the indicator switches to fast blink. Delivery begins;
2. Once the cup is filled to the desired level, press the button again: delivery ceases and the quantity is stored.

Please note!

To cancel the current setting, press a button corresponding to any drink

8. MAKING  CAPPUCCINO

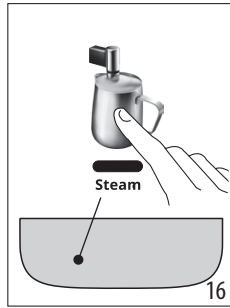
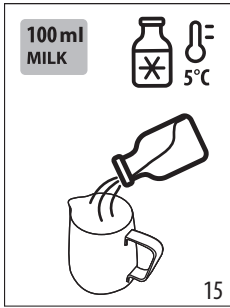
8.1 What milk to use



The quality of the froth will vary depending on:

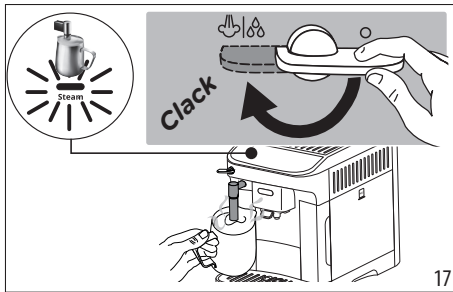
- the temperature of the dairy or vegetable milk used (for best results, always use dairy or vegetable milk straight from the fridge: 5 °C);
- type of milk or vegetable drink;
- the brand used;
- ingredients and nutritional values.

8.2 Making cappuccino

1. Fill a container with about 100 ml of milk for each cappuccino to be prepared (15) . When choosing the size of the container, bear in mind that the liquid will double or triple in volume.



2. Immerse the cappuccino maker (A17) in the milk container.
3. Press the Steam button  (B12) (fig. 16).
4. Wait until the Led of the steam/hot water dial (A20) switches to fast blink: now turn the steam/hot water dial (A20) to the  position (fig. 17).



5. After a few seconds, steam is delivered from the cappuccino maker, giving the milk a creamy frothy appearance and making it more voluminous. For a creamier froth, rotate the container with slow movements in an upward direction.
6. Once the froth is as required, shut off the steam by turning the dial to the 0 position.
7. Prepare the coffee in a large cup.
8. Add the frothed milk to the coffee. The cappuccino is ready. Sweeten to taste and, if desired, sprinkle the froth with a little cocoa powder.

Please note:


To deliver steam, be sure to turn the Steam dial as far as it will go.

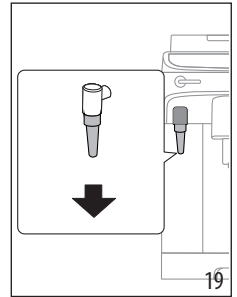
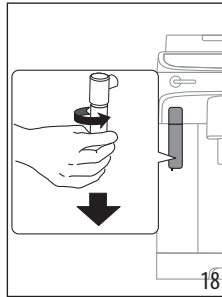
8.3 Clean the steam/hot water spout after use

Clean the steam/hot water spout (A19) every time it is used, to prevent the build-up of milk deposits and prevent it from clogging.

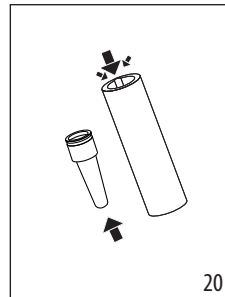
Danger of scalding!

When cleaning the steam/hot water spout, a little hot water will be released. Take care to avoid contact with splashes of water.

1. Release a little water by turning the steam/hot water dial (A20) to the  position. Now stop the flow by turning the dial back to the 0 position.
2. Wait a few minutes for the spout to cool down. Turn the cappuccino maker (A17) anti-clockwise and pull down to remove (fig. 18).
3. Pull the nozzle (A18) downwards (fig. 19).



4. Make sure the two holes arrowed in fig. 20 are not clogged. If necessary, clean using a toothpick.




5. Reinsert the nozzle and reconnect the cappuccino maker to the nozzle, pushing upwards and turning clockwise until the two engage.

9. DELIVERING HOT WATER

Danger of scalding!

Never leave the machine unattended when hot water is being released. The tube of the steam/hot water spout (A19) heats up when in use.

1. Position a container under the steam/hot water spout (as close as possible to avoid splashes).
2. Turn the steam/hot water dial (A20) to the  position (fig. 17).
3. To shut off the flow of hot water manually, turn the steam/hot water dial to the 0 position.

Please note:

In energy saving mode, a few seconds may elapse before hot water emerges as the machine must heat up.

10. WATER SOFTENER FILTER

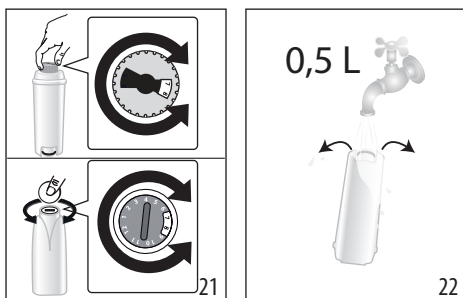
To ensure constant performance of the machine over time, we recommend using a De'Longhi water softener filter.

For more information, visit the www.delonghi.com website.

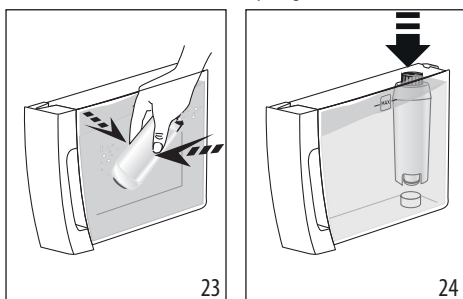
WATERFILTER  EAN: 8004399327252

To use the filter correctly, follow the instructions below.

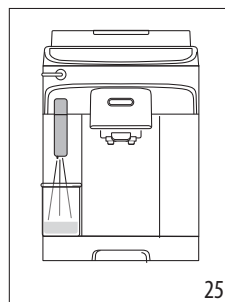
1. Remove the filter from the packaging and turn the date indicator to view the next two months (fig. 21);






2. To activate the filter, run tap water through the hole in the centre of the filter until water comes out of the openings at the side for more than a minute (fig. 22);
3. Remove the tank from the machine and fill with water; insert the filter in the water tank, immersing it completely for about ten seconds, while tilting it and applying light pressure so that the air bubbles are able to escape (fig. 23);




4. Insert the filter in the relative housing and press fully home (fig. 24);
5. Close the tank with the lid, then reposition the tank in the machine;
6. Place an empty container of at least 0.5 litres capacity under the steam/hot water spout (fig. 25).



7. See instructions in section "12. Settings menu" for installation of the filter;
8. The Led of the steam button  switches to fast blink: now turn the steam/hot water dial (A20) to the  position (fig. 17).
9. The machine delivers hot water, stopping automatically;
10. The Led of the steam button  switches to fast blink: now turn the steam/hot water dial to the **0** position;
11. The filter is now active and the machine can be used.

Please note:

If the Led of the  button (B4) blinks rapidly, press the button. This will cause the internal circuits of the machine to start filling up, expelling the air bubbles that have been formed and allowing the installation to proceed.

10.1 Replacing the filter

Replace the filter when the  indicator (B8) lights up.

1. Remove the water tank and the spent filter;
2. Follow the operations described in the previous section to activate the filter;
3. See instructions in section "12. Settings menu" to set the machine and repeat steps 8 to 11 of the preceding section.

Please note:

After two months (see date indicator), or after 3 weeks if the machine has not been used, the filter should be replaced even if the warning message has not yet been displayed.

10.2 Removing the filter

To continue using the appliance without the filter, it must be removed, and the appliance notified of its removal.

1. Remove the water tank and the spent filter;
2. See instructions in section "12. Settings menu" to set the machine accordingly.

Please note:

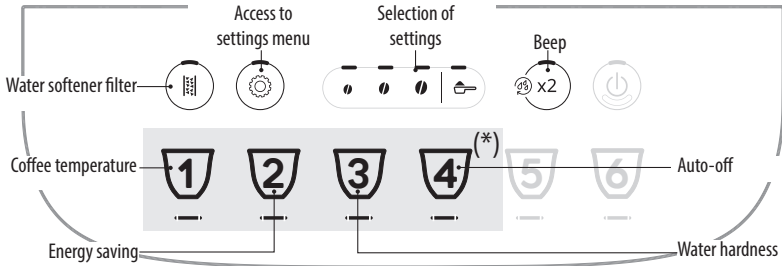
After two months (see date indicator), or after 3 weeks if the appliance has not been used, the filter should be replaced even if the warning message has not yet been displayed.

11. TIPS FOR ENERGY SAVING

- Set auto-off to 15 minutes (see “12. Settings menu”);
- Enable Energy Saving (see “12. Settings menu”);
- Always carry out the descaling cycle when prompted by the machine.

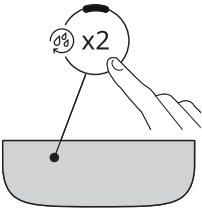
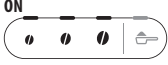
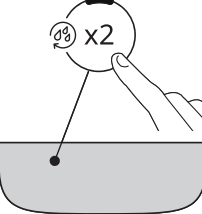
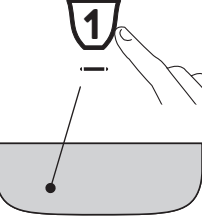



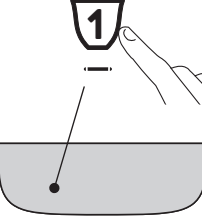
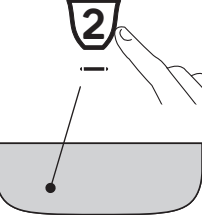

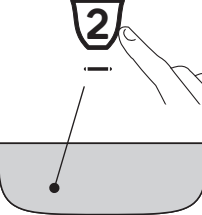
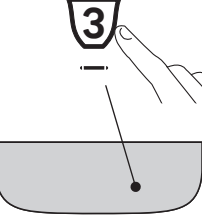
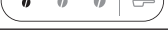



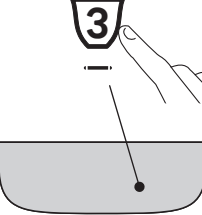

12. SETTINGS MENU







When in the menu, use the active buttons to select the corresponding functions:



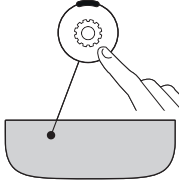

(*) Drinks differing according to model

1. Access the menu:			
<p>x 5 sec</p>		<p>Press and hold the button for a few seconds: the settings buttons light up. Proceed by pressing the button for the setting to be adjusted.</p>	
2. Adjust the machine settings:			
<p>Water softener filter</p>	<p>Press one of the bean symbols to install or replace the water softener filter</p>	<p>INSERTED</p>	<p>Confirm selection</p>
	<p>Press the pre-ground symbol to remove the water softener filter</p>	<p>REMOVED</p>	
→			

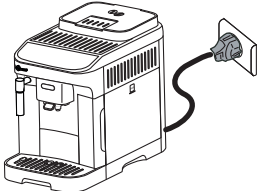

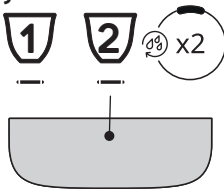
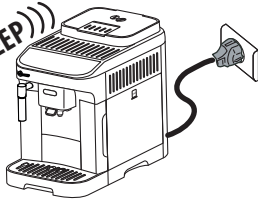
<p>Beep</p> 	<p>Press one of the bean symbols to enable the beep</p>	<p>ON</p> 	<p>Confirm selection</p> 
<p>Coffee temperature</p> 	<p>Press the bean symbol corresponding to the required temperature</p>	<p>LOW</p>  <p>MEDIUM</p>  <p>HIGH</p> 	<p>Confirm selection</p> 
<p>Energy saving</p> 	<p>Press one of the bean symbols to enable energy saving</p>	<p>ON</p> 	<p>Confirm selection</p> 
<p>Water hardness</p> 	<p>Press the symbol corresponding to the level being set</p>	<p>LEVEL 1</p>  <p>LEVEL 2</p>  <p>LEVEL 3</p>  <p>LEVEL 4</p> 	<p>Confirm selection</p> 
			

<p>Auto-off</p>  <p>Press the symbol corresponding to the time being set</p>	<p>15 MINUTES</p>  <p>30 MINUTES</p>  <p>1 HOUR</p>  <p>3 HOURS</p> 	<p>Confirm selection</p> 
---	--	--

3. Exit the menu:

	<p>Press the  button: The machine is ready for use again.</p> <p>Please note! After 30 seconds without a button being pressed, the machine exits the settings menu automatically.</p>
---	---

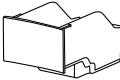

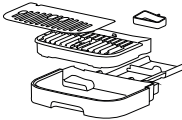
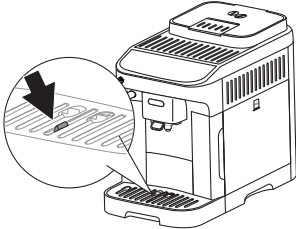
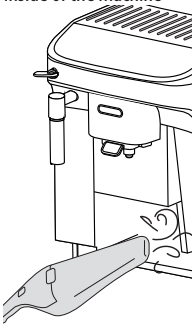
12.1 Reset to default values

<p>Make sure the machine is in stand-by (off, but connected to the mains power supply).</p>	
<p>Press the buttons corresponding to drinks 1, 2 and  and hold for 5 seconds. All the settings and drink quantities are reset to the default values.</p>	<p>x 5 sec</p> 
<p>The machine emits a long beep and all indicator lights blink to confirm the reset</p>	<p>BEEP)))</p> 


13. CLEANING THE MACHINE

Important!

- Do not use solvents, abrasive detergents or alcohol to clean the machine. With De'Longhi superautomatic coffee machines, no chemical additives are required for cleaning purposes.
- Do not use metal objects to remove encrustations or coffee deposits as they could scratch metal or plastic surfaces.

Component	Frequency	Procedure
<p>Grounds container</p> 	<p>When the  indicator lights up, the grounds container must be emptied: the machine cannot now make coffee.</p> <p>The appliance cannot be used to make coffee again until the grounds container has been cleaned. The machine will display the message indicating the need to empty the grounds container 72 hours after the first coffee has been prepared, even if the container is not full (for the 72 hours to be calculated correctly, the machine must never be disconnected from the mains power supply).</p>	<ul style="list-style-type: none"> • Remove the drip tray, empty and clean. • Empty the grounds container and clean thoroughly to remove all residues that may have collected on the bottom. • Check the condensate tray (colour red) and if full, empty if out.
<p>Drip tray components</p> 	<p>The drip tray is fitted with a level indicator (red) showing the level of water it contains.</p> <p>Before the indicator projects from the cup tray, the drip tray must be emptied and cleaned</p> 	<ul style="list-style-type: none"> • Remove the drip tray and the grounds container; • Remove the cup tray and drip tray grille, then empty the drip tray and grounds container and wash all the components; • Check the red condensate tray and, if full, empty if out; • Replace the drip tray complete with grille and the grounds container. <p>When removing the drip tray, the coffee grounds container must always be emptied, even if it has not filled up noticeably.</p>
<p>Inside of the machine</p> 	<p>Check periodically (about once a month) that the inside of the machine (accessible by removing the drip tray) is not dirty.</p>	<p>Switch the machine off and isolate it from the power supply. Never immerse the machine in water.</p> <ul style="list-style-type: none"> • Remove coffee deposits with a brush and sponge; • Remove all residues with a vacuum cleaner




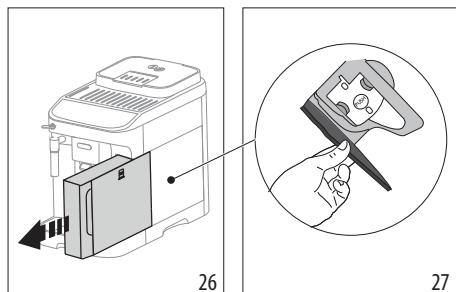
Component	Frequency	Procedure
Coffee spouts 	Clean the coffee spouts periodically (once a month)	<ul style="list-style-type: none"> • Clean the coffee spouts periodically with a sponge or cloth; • Check that the holes in the coffee spout are not blocked. If necessary, remove coffee deposits with a toothpick.

14. CLEANING THE BREWING UNIT

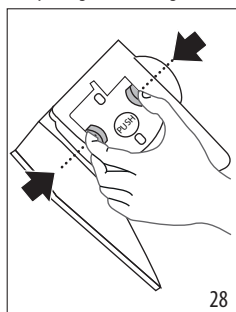
Important!

The brewing unit cannot be removed while the machine is on.

1. Press the  button to turn the machine off;
2. Remove the water tank (fig. 26);
3. Open the brewing unit flap, positioned on the right hand side (fig. 27);



4. Press the two coloured release buttons inwards, while at the same time pulling the brewing unit outwards;



5. Immerse the brewing unit in water for about 5 minutes, then rinse under the tap;

Important!

RINSE WITH WATER ONLY
NO DETERGENTS - NO DISHWASHER

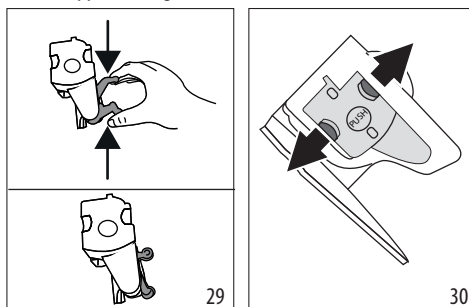
6. Do not use detergents when cleaning the brewing unit, as they could damage it.

7. Use a brush to remove any coffee residues left in the housing of the brewing unit, which can be seen through the relative flap;
8. After cleaning, replace the brewing unit by sliding it into its housing, then apply pressure to the PUSH symbol until it clicks into place;

Please note:

If the brewing unit is difficult to insert, before insertion, position it correctly by pressing the two levers (fig. 29).

9. Once inserted, make sure the two coloured buttons have snapped out (fig. 30);



10. Close the flap of the brewing unit;
11. Reposition the water tank in the machine.

15. DESCALING

- Before use, read the instructions and the labelling on the descaler pack.
- Use only descaler supplied by De'Longhi. If unsuitable descaler is used, or descaling is not carried out properly and when required, the machine may develop faults not covered by the manufacturer's guarantee.
- Descaler can cause damage to delicate surfaces. If the product is accidentally spilt, dry immediately.

To descale

Descaler	De'Longhi descaler
Container	Recommended capacity: 2l
Time	~45min

Important:


If the water softener filter is installed, it must be removed before adding the descaler solution. Thereafter, reinstate the filter at the start of rinsing at step 12.

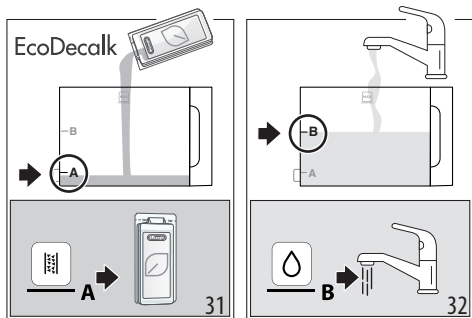
Descal the machine when the  indicator lights up on the control panel (B8).

Please note:

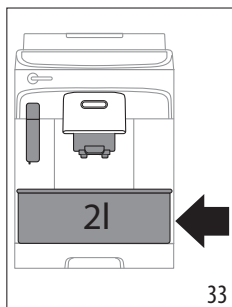
- Once the descaling cycle has begun, it cannot be interrupted and must be concluded with the full rinse cycle. With this in mind, make sure there is sufficient descaler.



Proceed as follows:

1. Press the  button (B11) and hold for at least 5 seconds, until the relative Led starts blinking rapidly.
2. Empty the drip tray (A14) and the grounds container (A10) and reposition them; empty the water tank completely (A9) and remove the softener filter (if installed);
3. Pour the descaler into the tank, filling to level **A** (which corresponds to a 100ml pack) marked on the side (front) of the tank (fig. 31); next, add water (one litre) up to level **B** (fig. 32); finally, return the water tank to the machine;



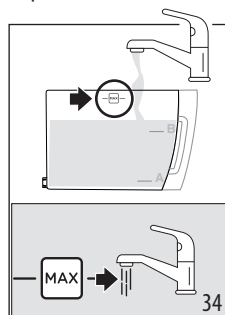
4. Position an empty container of at least 2 litres capacity under the coffee spout (A16) and under the cappuccino maker (A17) (fig. 33).






5. - Press the  button to start the descale cycle.
6. After a few seconds, the Led of the  button will blink rapidly to indicate that the steam/hot water dial (A20) should be turned to the **I** position (fig. 17).
7. For about 30 minutes, the machine alternates automatically between pausing and delivering liquid from the steam/hot water spout and the coffee spout.



When the first step of the descaling cycle has been completed, the low water level indicator (B7) will light up.

8. Empty the container used to collect the descaler solution. Remove and empty the water tank, rinse under running water, then fill with fresh water up to the MAX level (fig. 34) and reposition in the machine; reposition the container under the spouts;



9. Press the  button (which blinks rapidly) to start the rinse;
10. The machine proceeds automatically with the rinse: the Led of the steam button  blinks rapidly, indicating that the steam/hot water dial (A20) must be turned to the **0** position (fig. 1);
11. After ten seconds or so, when the Led of the steam button  blinks rapidly, turn the steam/hot water dial to the **I** position (fig. 17): the rinse fluid will flow from the coffee and steam/hot water spouts;

When the second step of the descaling cycle has been completed, the low water level indicator (B7) will light up.

12. Empty the container used to collect the water from the first rinse. Remove and empty the water tank, then fill with fresh water up to the MAX level (fig. 34) and reinstate the softener filter, if in use; return the tank to the machine and reposition the container under the spouts;
13. Press the  button (which blinks rapidly) to start the rinse;
14. When the the Led of the steam button  starts blinking, turn the steam dial to the **0** position.

15. The no water indicator (B7) lights up. Empty the grounds container and the drip tray, in which part of the rinse water will have been collected; finally, refill the water tank.

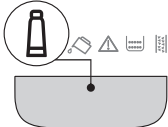

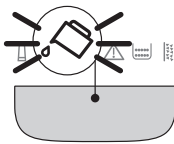
16. Reposition all components in the machine.

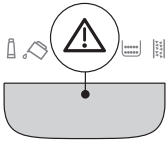


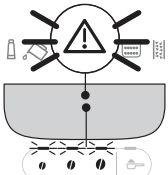
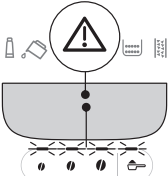
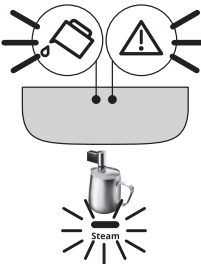
The machine is ready for use.

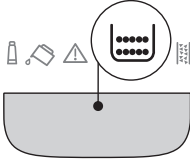
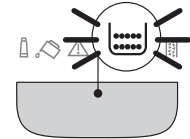
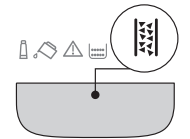
Please note:

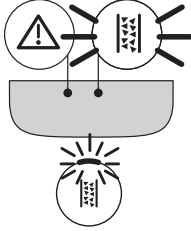
- Water may find its way into the grounds container during the rinse procedure: this is quite normal.
- If the water tank has not been refilled to the MAX level, the machine prompts for a third rinse to ensure that the descaler solution has been completely eliminated from the internal circuits.

16. EXPLANATION OF LIGHTS

Light	Meaning
Drink indicators blinking	The machine is warming up: wait
Drink and settings indicators permanently alight	The machine is ready for use: select the desired drink and the relative options
	Replace the filter (see section "10. Water softener filter")
	Insufficient water in tank: fill the tank
	The water tank is missing, or is not positioned correctly: ensure the tank is correctly in place
→	

Light	Meaning
	General alarm: the inside of the machine is very dirty. Clean the machine thoroughly. If the message is still displayed after cleaning, contact De'Longhi Customer Services and/or an approved Service Centre
	The brewing unit has not been replaced after cleaning: reinstate the brewing unit as described in section "14. Cleaning the brewing unit"
	No coffee beans: fill the beans container, then press any button to exit the alarm condition.
	The beans are too finely ground, so that the coffee is delivered too slowly or not at all. Adjust the coffee grinder (section "7.8 Adjusting the coffee grinder")
	Too much coffee has been used. Select a milder taste or reduce the quantity of pre-ground coffee
	The water circuit is empty. Press the "Steam" button
→	

Light	Meaning
	The grounds container needs emptying
	The grounds container is missing, or not inserted correctly: position the drip tray complete with grounds container and press fully home
	Descaling is required ("15. Descaling")
→	


Light	Meaning
	<p>Descaling has been interrupted. To use the machine again:</p> <ol style="list-style-type: none"> 1. Press the button; 2. If the steam dial is in position 0, turn it to the position: the machine starts to deliver liquid again and the descaling cycle will resume from the rinse step.

17. TROUBLESHOOTING

Possible malfunctions of the machine are listed below.

If the problem cannot be resolved as described, contact Customer Service.

PROBLEM	POSSIBLE CAUSE	REMEDY
The appliance does not switch on.	The cord is not plugged into the mains socket.	Plug into the mains socket.
The coffee is not hot.	The cups were not preheated.	Warm the cups by rinsing them with hot water (Please note: the hot water function can be used).
	The internal circuits of the appliance have cooled down because 2-3 minutes have elapsed since the last coffee was made.	Before making coffee, press and hold the button for a few seconds to perform a rinse cycle and warm the internal circuits.
	Coffee temperature setting too low.	Select a hotter coffee temperature in the settings menu (see "12. Settings menu").
	The machine needs descaling	Run the descale procedure. Next, check the water hardness ("4. Measuring water hardness") and make sure the machine setting matches the local water supply hardness ("12. Settings menu").
→		

PROBLEM	POSSIBLE CAUSE	REMEDY
The coffee is weak or not creamy enough.	Coffee ground too coarsely.	Adjust the grinding level ("7.8 Adjusting the coffee grinder"). The effect will not be noticeable until at least 2 coffees have been made.
	Coffee not suitable.	Use coffee for espresso machines.
	Coffee not fresh.	The coffee pack has been opened for too long and has lost its taste.
The coffee emerges too slowly or drop-by-drop.	Coffee ground too finely.	Adjust the grinding level ("7.8 Adjusting the coffee grinder"). The effect will not be noticeable until at least 2 coffees have been made.
The machine will not dispense any coffee	Impurities have been detected in the internal circuits	Wait until the machine is ready for use again, and proceed to select the required drink. Contact an authorized Service Centre if the problem persists.
Coffee does not come out of one or both spouts.	Coffee nozzles blocked.	Clean the nozzles with a cloth. Any encrusted deposits can be removed with a toothpick, if necessary.
The coffee delivered is watery.	Pre-ground coffee funnel clogged.	Open the flap and clean the funnel with the aid of a brush.
The brewing unit cannot be removed.	The machine has not been correctly switched off.	Turn the machine off by pressing the  button.
With the descaling procedure completed, the appliance prompts for a third rinse	During the two rinse cycles, the water tank was not filled to the MAX level	Empty the drip tray, fill the tank up to the MAX level and perform the third rinse cycle.
The milk has big bubbles	The milk is not cold enough, or is not semi-skimmed or skimmed.	Use skimmed or semi-skimmed milk straight from the refrigerator (temperature about 5° C). If the result is still not as expected, try changing the brand of milk.
	Cappuccino maker dirty.	Remove the components and clean them thoroughly.
	Vegetable drinks are being used.	The end-result varies widely depending on the nutritional properties of the drinks.
The cup tray on top of the machine is hot	Several drinks have been prepared in rapid succession	
The machine emits noises or small puffs of steam while not in use	The machine is ready for use or has just been turned off, and a few drops of condensate are falling into the steamer, which is still hot.	This is part of normal operation. To limit the phenomenon, empty the drip tray.
The appliance emits puffs of steam from the drip tray and/or there is water on the surface the appliance rests on.	The drip tray grille has not been replaced after cleaning.	Reposition the grille in the drip tray.

18. TECHNICAL DATA

Voltage:	220-240 V~ 50-60 Hz max. 10 A
Power:	1450 W
Pressure:	1.5 MPa (15 bar)
Water tank capacity:	1.8l
Size LxDxH:	240x440x360 mm
Cord length:	1250 mm
Weight:	9.4 kg
Bean container capacity:	250 g

De'Longhi reserves the right to modify the technical specification and styling of its products at any moment, without compromising their functionality and quality.



57132C9221_00_0724