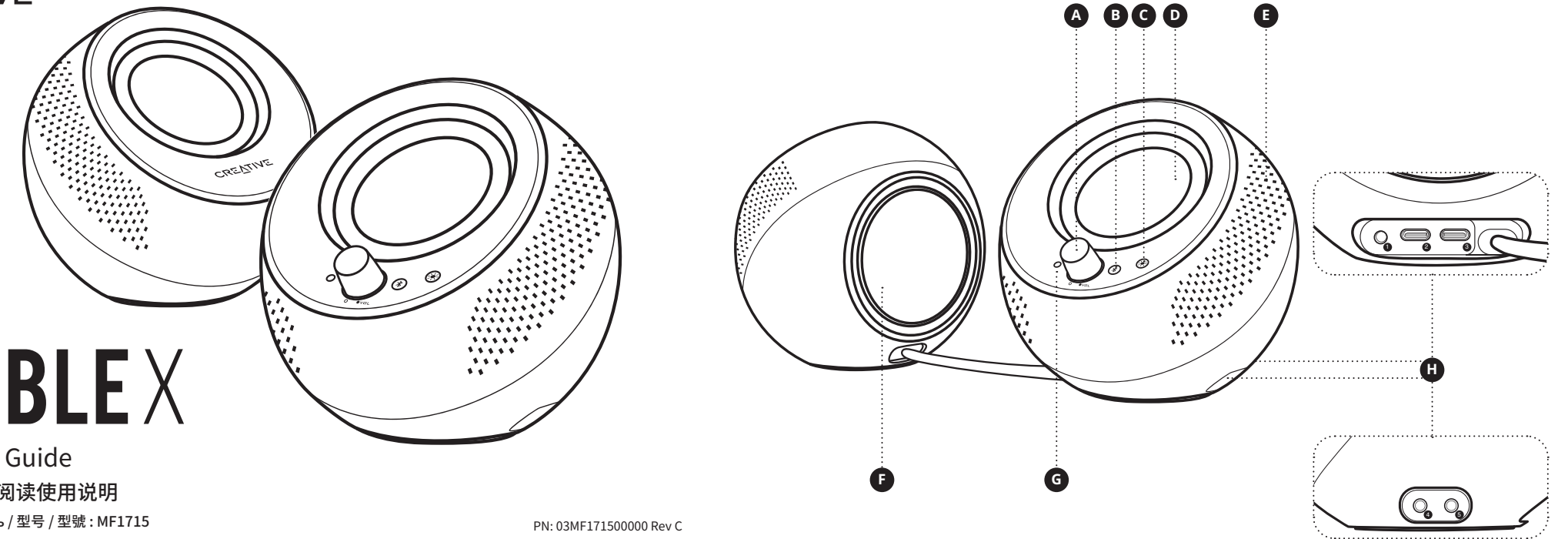


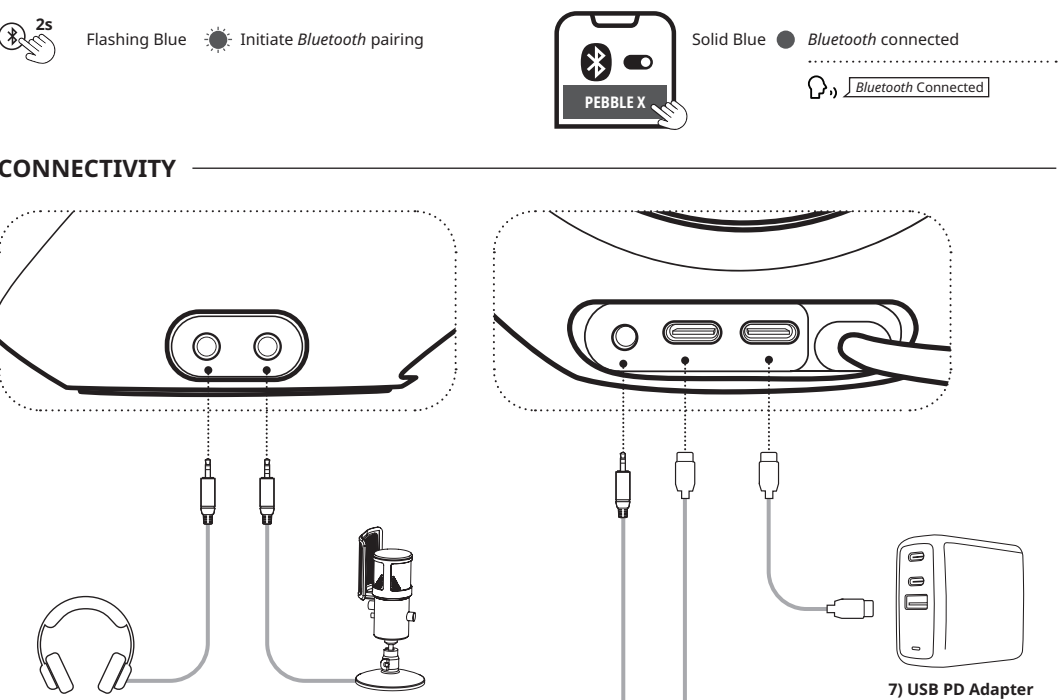
PEBBLE X

Quick Start Guide
使用产品前请阅读使用说明
Model No./ Модель / 型号 / 型號: MF1715

OVERVIEW



BLUETOOTH® CONNECTIVITY



1) Wired Headphones 2) Microphone 3) Tablets / Mobile Devices 4) Portable Players 5) PC / Mac 6) PlayStation® Consoles 7) USB PD Adapter *USB PD Adapter not included

TECHNICAL SUPPORT

www.creative.com/support
www.creative.com/register

REGISTER YOUR PRODUCT

www.creative.com/register

- A) Volume Knob**
ON / OFF
VOL
- B) Multifunction Button**
• Bluetooth Pairing
• Source Selection
- C) RGB Control Button**
Chasers → Aurora → Peak Meter → Off → Cycle → Wave → Glow
- D) Full-range Drivers**
- E) RGB Lighting**
- F) Passive Radiator**
- G) LED Indicator**
Solid Red ● Power Off
Flashing Blue ● Picked Source Color
Flashing White ● Brightness Control
Solid Blue ● Bluetooth Paired
Solid Green ● AUX Input
Solid Purple ● USB Audio
- H) Ports**
(1) 3.5 mm AUX Input Port
(2) USB-C Port (Audio and Power, up to 5V $\overline{\text{---}}$ 3A)
(3) PD-Power Port (up to 15W $\overline{\text{---}}$ 2A)
(4) 3.5 mm 4-pole headphone output port
(5) 3.5 mm microphone input port

FIRMWARE UPDATE

If an update is available, visit creative.com/support/PebbleX to download the firmware file. A PC is required to perform this action.

DOWNLOAD

Set up, customize your product, and more with the Creative app.

Download the Creative app from:



creative.com/support/PebbleX

creative.com/support/PebbleX

creative.com/support/PebbleX

DE

ÜBERSICHT
(A) Lautstärkeregelung
(B) Multifunktions Taste
(C) RGB-Steuerungstaste
(D) Vollbereichstreiber
(E) RGB-Beleuchtung
(F) Passiver Strahler
(G) LED-Anzeige
(H) Ports

KONNEKTIVITÄT
1) Kopfhörer
2) Mikrofon
3) Tablets/Mobilgeräte
4) Tragbare Player
5) PC/Mac
6) PlayStation-Konsolen
7) USB PD-Adapter

FR

PANORAMICA
(A) Manopola del volume
(B) Pulsante multifunzione
(C) Pulsante di controllo RGB
(D) Driver full-range
(E) Illuminazione RGB
(F) Radiador pasivo
(G) Indicatore LED
(H) Porte

IT

ES

NL

NO

FI

SV

FR

APERÇU GÉNÉRAL
(A) Molette de volume
(B) Bouton multifonction
(C) Bouton de contrôle RVB
(D) Haut-parleurs à large bande
(E) Éclairage RVB
(F) Radiateur passif
(G) Indicateur DEL
(H) Portes

CONNEKTIVITÀ
1) Auricolari/Cuffie
2) Microfono
3) Tablet / Mobile apparati
4) Lettori portatili
5) PC/Mac
6) Console PlayStation
7) Adattatore USB PD

IT

DESCRIPCIÓN GENERAL
(A) Rueda de volumen
(B) Multifuncional botón
(C) Botón de control RGB
(D) Drivers de rango completo
(E) Iluminación RGB
(F) Radiador pasivo
(G) Indicador LED
(H) Puertas

NL

NO

FI

SV

IT

CONNEKTIVITÀ
1) Auricolari/Cuffie
2) Microfono
3) Tablet / Mobile apparati
4) Lettori portatili
5) PC/Mac
6) Console PlayStation
7) Adattatore USB PD

CONNEKTIVITÀ
1) Auricolari/Cuffie
2) Microfono
3) Tablet / Mobile apparati
4) Lettori portatili
5) PC/Mac
6) Console PlayStation
7) Adattatore USB PD

ES

DESCRIPCIÓN GENERAL
(A) Rueda de volumen
(B) Multifuncional botón
(C) Botón de control RGB
(D) Drivers de rango completo
(E) Iluminación RGB
(F) Radiador pasivo
(G) Indicador LED
(H) Puertas

NL

NO

FI

SV

ES

DESCRIPCIÓN GENERAL
(A) Rueda de volumen
(B) Multifuncional botón
(C) Botón de control RGB
(D) Drivers de rango completo
(E) Iluminación RGB
(F) Radiador pasivo
(G) Indicador LED
(H) Puertas

CONNEKTIVITÀ
1) Auricolari/Cuffie
2) Microfono
3) Tablet / Mobile apparati
4) Lettori portatili
5) PC/Mac
6) Console PlayStation
7) Adattatore USB PD

NL

OVERZICHT
(A) Volumeknop
(B) Multifunctionsknop
(C) RGB-bedieningsknop
(D) Drivers met volledig bereik
(E) RGB-verlichtingsknop
(F) Passieve radiator
(G) LED-indicator
(H) Poorten

NL

NO

FI

SV

NL

OVERZICHT
(A) Volumeknop
(B) Multifunctionsknop
(C) RGB-bedieningsknop
(D) Drivers met volledig bereik
(E) RGB-verlichtingsknop
(F) Passieve radiator
(G) LED-indicator
(H) Poorten

CONNEKTIVITÀ
1) Auricolari/Cuffie
2) Microfono
3) Tablet / Mobile apparati
4) Lettori portatili
5) PC/Mac
6) Console PlayStation
7) Adattatore USB PD

NL

OVERZICHT
(A) Volumeknop
(B) Multifunctionsknop
(C) RGB-bedieningsknop
(D) Drivers met volledig bereik
(E) RGB-verlichtingsknop
(F) Passieve radiator
(G) LED-indicator
(H) Poorten

NL

NO

FI

SV

NO

ÖVERSIKT
(A) Volumknapp
(B) Multifunktionsknapp
(C) RGB-kontrollknapp
(D) Drivers med full rekkevidde
(E) RGB-belysning
(F) Passiv radiator
(G) LED-merkkvalo
(H) Portar

ANSLUTNING
1) Headset / Hørlurar
2) Mikrofon
3) Surftablat/mobil enheter
4) Bærbar speler
5) PC/Mac
6) PlayStation-konsoll
7) USB PD-adapter

NO

ÖVERSIKT
(A) Äänervolymakkunappi
(B) Multifunktionseinäike
(C) RGB ohjaukspainikkeella
(D) Täyden valikoiman elementit
(E) RGB-valaistus
(F) Passiiv radiator
(G) LED-merkkivalo
(H) Portat

NO

NO

NO

NO

FI

YLEISKUVAUS
(B) Multifunktionseinäike
(C) RGB ohjaukspainikkeella
(D) Täyden valikoiman elementit
(E) RGB-valaistus
(F) Passiiv radiator
(G) LED-merkkivalo
(H) Portat

ANSLUTNING
1) Headset / Hørlurar
2) Mikrofon
3) Surftablat/mobil enheter
4) Bærbar speler
5) PC/Mac
6) PlayStation-konsoll
7) USB PD-adapter

NO

ANSLUTNING
1) Headset / Hørlurar
2) Mikrofon
3) Surftablat/mobil enheter
4) Bærbar speler
5) PC/Mac
6) PlayStation-konsoll
7) USB PD-adapter

NO

NO

NO

NO

SV

ÖVERSIKT
(A) Volymknapp
(B) Multifunktionseinäike
(C) RGB-kontrollknapp
(D) Högtalarelement för fullt register
(E) RGB-belysning
(F) Passiv radiator
(G) LED-indikator
(H) Portar

ANSLUTNING
1) Headset / Hørlurar
2) Mikrofon
3) Surftablat/mobil enheter
4) Bærbar speler
5) PC/Mac
6) PlayStation-konsoll
7) USB PD-adapter

NO

ANSLUTNING
1) Headset / Hørlurar
2) Mikrofon
3) Surftablat/mobil enheter
4) Bærbar speler
5) PC/Mac
6) PlayStation-konsoll
7) USB PD-adapter

NO

NO

NO

NO

