

*Tenda*



All for better networking.

**TEG1050F**

48GE+2SFP Ethernet Switch

[www.tendacn.com](http://www.tendacn.com)

Link  
More



# TEG1050F

## 48GE+2SFP Ethernet Switch

### Products Description

Developed by Tenda, TEG1050F is a Gigabit unmanaged Ethernet switch designed for establishing wired networks of high density and high speed in such scenarios as enterprises, parks, schools, and internet cafes, providing a simple, easy, cost-effective, and rapid internet access solution for video surveillance and SMBs' networking. With 48 10/100/1000 Mbps RJ45 ports, and 2 independent Gigabit SFP slots that can be paired with Tenda's SFP modules, this switch can be used to deploy a long-distance network up to 20 km. Its full-duplex transmission rate can reach 2000 Mbps, ensuring the timely transmission of large files and smoothness of videos. Its one-key VLAN function can isolate broadcast storms. Its integrated professional lightning protection circuit offers 6 kV lightning protection for the built-in power supply and all Ethernet ports, ensuring the stability and reliability of the switch. The switch supports desktop mounting, rack mounting and wall mounting, and features a 1U 19-inch standard rack-mount shell design and plug & play function. With these advantages, it is an ideal choice for deploying a cost-effective and high-speed network.

## Key Feature

---

- Comply with IEEE 802.3, IEEE 802.3u, IEEE 802.3ab, IEEE 802.3z, and IEEE 802.3x standards.
- Provide 48 10/100/1000 Mbps Base-T Ethernet ports and support auto MDI/MDIX.
- Provide 2 independent 1000 Mbps SFP slots and support 20 km long-distance networking.
- Support 16 K MAC address table and MAC address auto-learning.
- Support full duplex IEEE 802.3x flow control and half duplex back pressure flow control.
- Support unblocked wire speed forwarding for all ports.
- Support 12 Mb large buffer queue.
- Integrated professional lightning protection circuit offers 6 kV lightning protection for the built-in power supply and all Ethernet ports.
- One-key VLAN function helps isolate broadcast storms effectively.
- Feature a 19-inch/1U standard rack-mount shell design.

## Product Features

---



### High-density Gigabit Ports

The switch provides 48 10/100/1000 Mbps auto-negotiation RJ45 ports, and 2 independent 1000 Mbps SFP ports. The full-duplex transmission rate of the switch can reach 2000 Mbps, and all ports feature wire speed forwarding, ensuring high performance for processing applications that require high bandwidth.



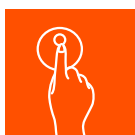
### 12 Mb Large Buffer

With 12 Mb large buffer, the switch can meet the needs of such network applications with burst traffic as search engine, IPTV, and P2P downloads, ensuring no packet loss, timely transmission of large files, and smoothness of videos.



### 6 kV Lightning Protection

This switch provides 6 kV lightning protection for both Ethernet ports and the power supply, and supports over-temperature, over-voltage and surge current protection.



### One-key VLAN

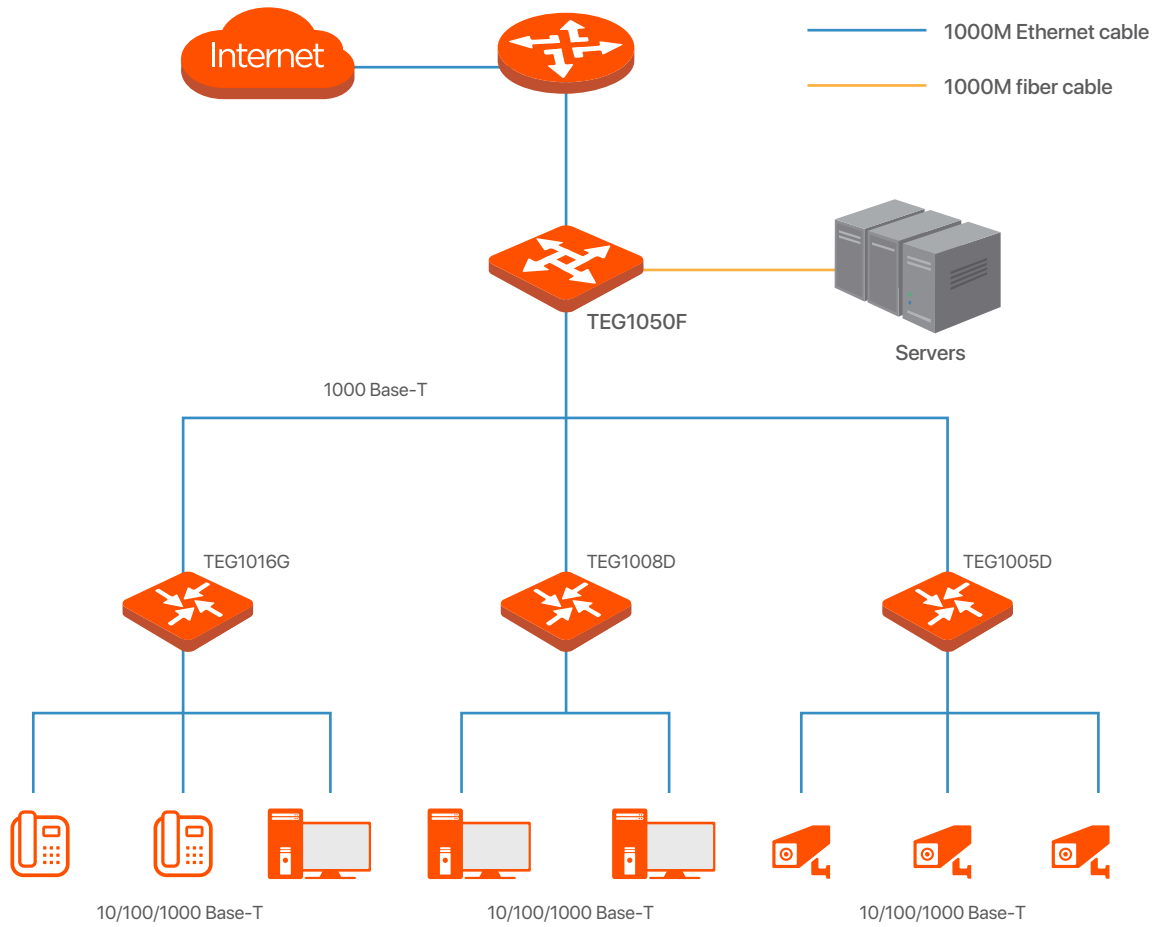
Under the VLAN mode, ports 1 to 46 cannot communicate with each other, but can communicate with uplink ports 47 to 50, isolating broadcast storms and enhancing network security.



### Ease of Use

The switch features a 1U 19-inch standard rack-mount shell design and can be easily installed on a 19-inch rack using the included L-shaped brackets. With plug & play function, it needs no professional settings and can be used for networking directly, greatly reducing the maintenance cost.

# Application Scenarios



# Product specifications

Product Information	
Product model	TEG1050F
Network standards	IEEE 802.3, IEEE 802.3u, IEEE 802.3x, IEEE 802.3ab, IEEE 802.3z
LED indicators	One Link/Act LED indicator for each Gigabit port One Power LED indicator for each device One VLAN LED indicator for each device
Ports	48 10/100/1000Base-T Ethernet ports 2 independent 1000 Mbps SFP ports
Transmission medium	Ethernet: CAT3 UTP or better Fast Ethernet: CAT5 UTP or better Gigabit Ethernet: CAT5e UTP or better 1000Base-SX: MMF 1000Base-LX: MMF or SMF
Dimensions (L x W x H)	440 mm x 240 mm x 44 mm
Product material	Steel shell
Fan	Fanless
Protection	Port lightning protection: 6 kV  Power supply lightning protection: 6 kV  Electrostatic protection: - Air discharge: ±8 kV - Contact discharge: ±6 kV
Forwarding mode	Store-and-forward
Switching capacity	100 Gbps
Packet forwarding rate	10 Mbps: 14880 pps 100 Mbps: 148800 pps 1000 Mbps: 1488000 pps
Buffer	12 Mb
MAC address table	16 K
Jumbo frame	12K
Power supply	Input: 100 - 240V AC 50/60Hz Output: 12V 4A
Whole switch consumption	Whole switch consumption: <48 W

# Product specifications

Mounting methods	Support desktop mounting Support wall mounting Support rack mounting
Environment	Operating temperature: 0°C - 45°C Storage temperature: -40°C - 70°C Operating humidity: (10% - 90%)RH, non-condensing Storage humidity: (5% - 90%)RH, non-condensing
Certificates	CCC, FCC, CE, RoHS
<b>Software features</b>	
Protocol	CDMA/CD
MAC address learning	Auto learning and auto updating
Function	One-key VLAN (In this mode, ports 1 to 46 cannot communicate with each other, but can communicate with ports 47 to 50.)

## SHENZHEN TENDA TECHNOLOGY CO.,LTD.

Tenda Technology Bldg.Int' IE-City,  
#1001 Zhong Shan Yuan Rd.,Nanshan District,Shenzhen China.

E-mail:support@tenda.com.cn

Tel:+86-755-2765 7098

Fax:+86-755-2765 7178

PC:518055



Like us on Facebook



Follow us on Twitter