

封面

封底



REDRAGON
CARDIOID
POINTING
NEBULA MODEMICROPHONE



Place QR code to download user manual
Cardioid Pointing Pickup Mode microphone Operating Instructions



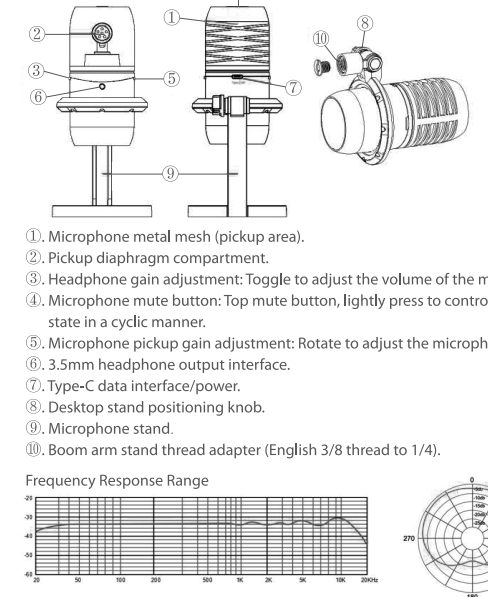
REDRAGON
CARDIOID
POINTING
NEBULA MODEMICROPHONE



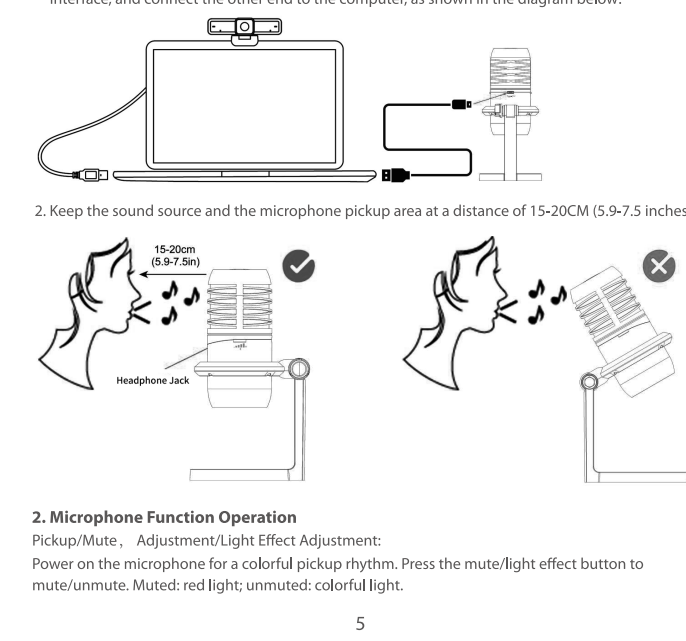
Cardioid Pointing Pickup Mode microphone Operating Instructions

| Pickup Technical Specifications | Performance Parameter | Extraction Amplifier Output Technical Specifications | Performance Parameter |
|--------------------------------------|---------------------------------|--|-----------------------|
| Pickup Pattern | Cardioid | Extraction Gain (Signal Noise Ratio) | >10dB |
| Diaphragm Compartment | 1x14mm Capacitive Membrane Core | Frequency Response | 20Hz-20kHz |
| Pickup Frequency Response | 20Hz-20kHz | Output Power (RMS) | 50mW |
| Sensitivity | -42dB±2dB (at 1kHz) | Total Harmonic Distortion | <0.5% (1kHz) |
| Signal-to-Noise Ratio | >50dB | Headphone Jack | 3.5mm stereo |
| Maximum Sound Pressure Level | 120dB (1kHz) | Headphone Output Impedance | >16Ω |
| Pickup Sensing to Base | 16x16x22.5mm | Headphone Monitoring Switching Rate | 48kHz |
| Other Specifications: | | | |
| Power and Connector | USB-C, 5V 100mA | Data Communication Interface | USB 2.0, Type-C |
| Dimensions (Length x Width x Height) | 88 x 106 x 116.5mm | Net Weight | 385g |
| Dynamic Light Effects | Yes/No | Working Temperature Range | 0°C-50°C |

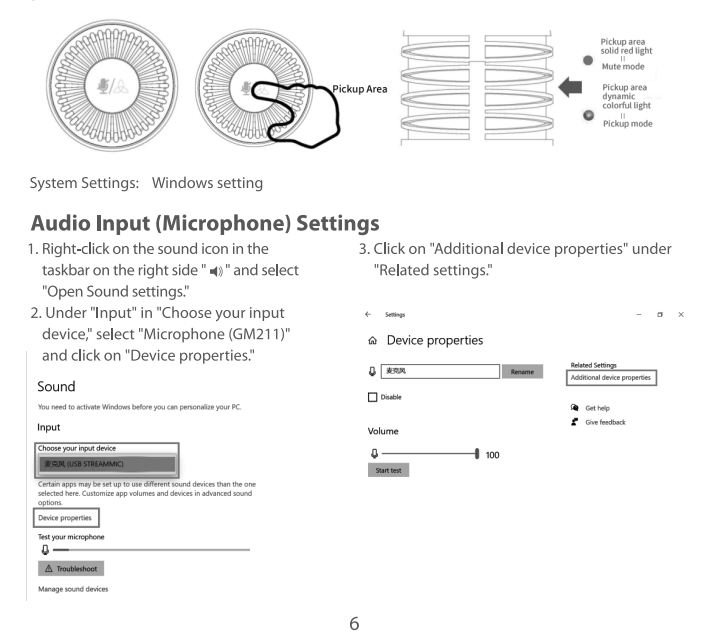
Function Structure



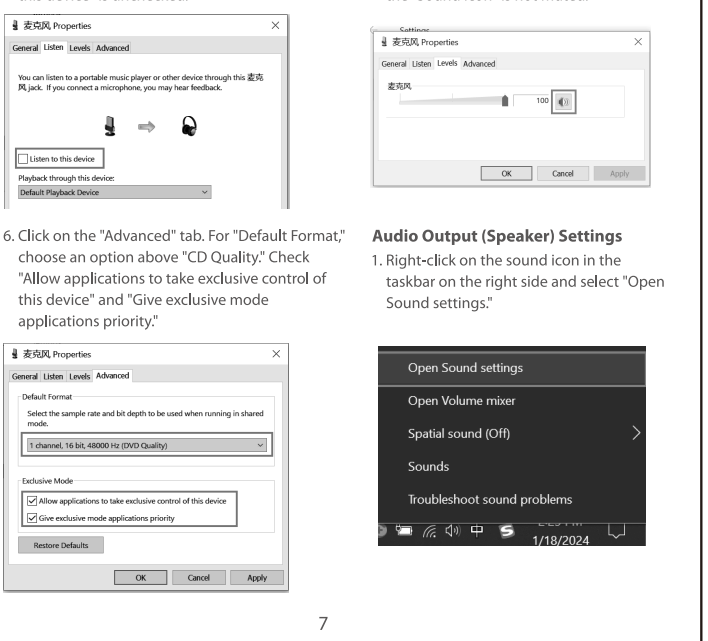
1. Microphone Installation Operation



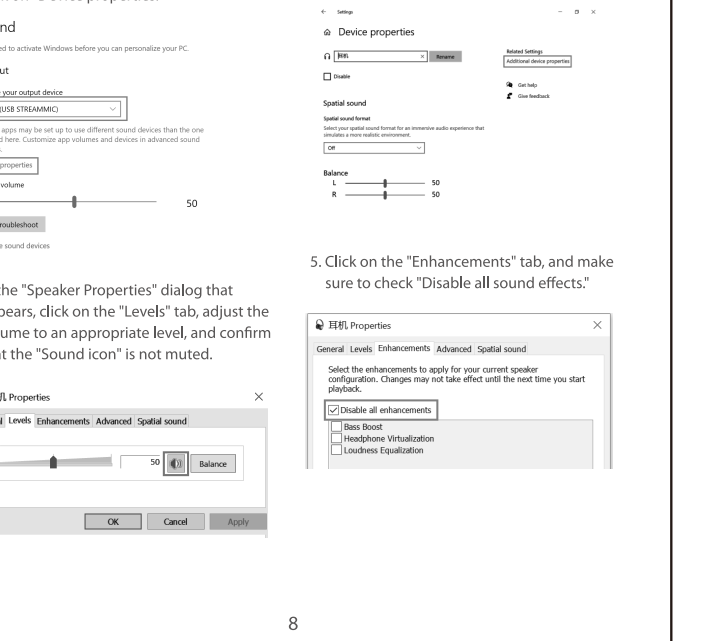
2. Microphone Function Operation



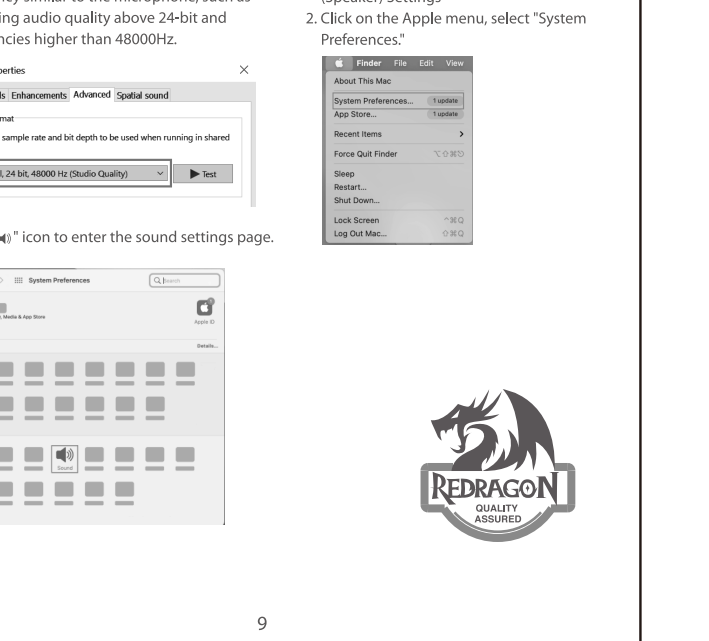
3. Mac OS X System Settings



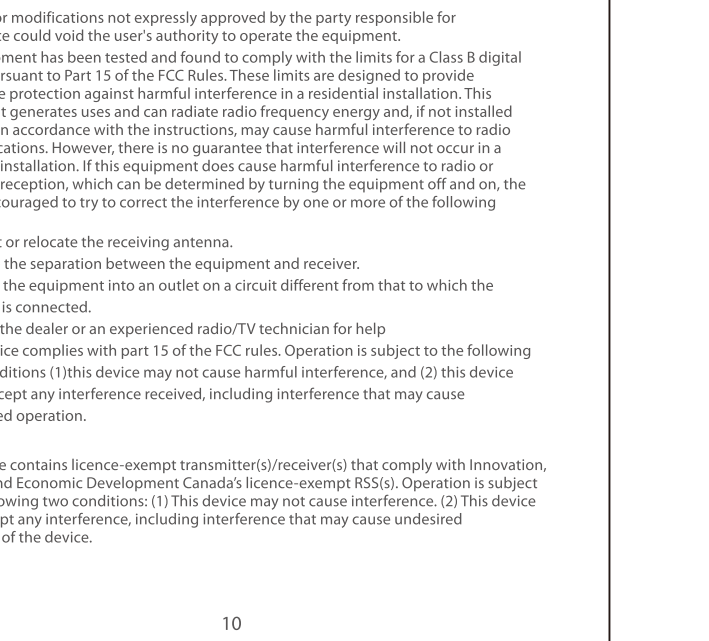
4. Windows Settings



5. Windows Settings



6. Windows Settings



US UK

Dear user
Thank you for choosing our **REDRAGON** product. To protect your rights and for better customer service, we ask that you note our warranty rules.
1. Within warranty period, repair is guaranteed for failure due to electrical circuit problems. Other damages, such as disassembly, hard impacts, submersion into water, plugging into improper current or voltage, and damage caused by natural disasters such as fire, flood, or earthquake are not included.
2. Consumable parts (such as foot pad) and spare parts replacement are not included in our warranty.

OS Support

PC, Mac, iOS with OTG adapter, Android

Microphone GM211

Product Size

Compatibilidade com OS

PC, Mac, iOS with OTG adapter, Android

Micrófono GM211

Tamanho do produto

| Especificações técnicas de captação | Parâmetros de medição | Especificações técnicas de saída de amplificação de linha de áudio | Parâmetros de medição |
|--|---------------------------------|--|--|
| Padrão de captação | Cardioid | SNR (relação sinal ruído na forma de tensão) | >10dB |
| Compartmento do diafragma | 1x14mm Capacitive Membrane Core | Nível de distorção harmônica total | <0.5% (1kHz) |
| Resposta de frequência de captação | 20Hz-20kHz | Tensão de saída (RMS) | 50mW |
| Sensibilidade | -42dB±2dB (at 1kHz) | Coefficiente de distorção harmônica total | <0.5% (1kHz) |
| Relação sinal-ruído | >50dB | Taxa de amostragem | 48kHz |
| Nível máximo de pressão sonora | 120dB (1kHz) | Taxa de amostragem de decodificação para monitoramento de áudio | 48kHz |
| Taxa de bits de amostragem de captação | 16 bits / 24 bits | Taxa de amostragem de decodificação para monitoramento de áudio | 48kHz |
| Taxa de bits de amostragem de saída | 16bits/24bits | Taxa de amostragem de decodificação para monitoramento de áudio | 48kHz |
| Outras especificações: | | | |
| Alimentação e conexão | USB-C, 5V 100mA | Interface de comunicação de dados | USB 2.0, Type-C |
| Dimensões (Comprimento x Largura x Altura) | 88 x 106 x 116,5mm | Peso líquido | 385g |
| Efeitos de iluminação com LEDs | Sim/Não | Adaptador de cabo para suporte de braço articulado | Resposta de frequência de 20Hz a 20kHz |

Estrutura das funções

1. Mantenha a fonte de áudio e a área de captação do microfone a uma distância de 15 a 20 cm (5.9 a 7.5 polegadas).
2. Mantenha a fonte de áudio e a área de captação do microfone a uma distância de 15 a 20 cm (5.9 a 7.5 polegadas).
3. Mantenha a fonte de áudio e a área de captação do microfone a uma distância de 15 a 20 cm (5.9 a 7.5 polegadas).
4. Mantenha a fonte de áudio e a área de captação do microfone a uma distância de 15 a 20 cm (5.9 a 7.5 polegadas).

1. Instalação e operação do microfone

1. Insira o cabo USB-C incluído, insira o conector Type-C na interface Type-C do microfone e conecte o outro extremidade ao computador, conforme mostrado no diagrama abaixo.
2. Mantenha a fonte de áudio e a área de captação do microfone a uma distância de 15 a 20 cm (5.9 a 7.5 polegadas).

2. Operação das funções do microfone

Captação Mute, Ajuste Efeito de Luz.

Ligue o microfone para obter a captação do ritmo. Pressione o botão de silenciamento/luz. Silenciado luz negra, não silenciado luz colorida.

1. Microphone Installation Operation

1. Insert the included USB cable, insert the Type-C connector into the microphone's Type-C interface, and connect the other end to the computer, as shown in the diagram below.
2. Keep the sound source and the microphone pickup area at a distance of 15-20cm (5.9-7.5 inches).

2. Microphone Function Operation

Pickup Mute, Adjustment Light Effect Adjustment.

Power on the microphone for a colorful pickup rhythm light effect. Repeat as needed.

1. Microphone Installation Operation

1. Insert the included USB cable, insert the Type-C connector into the microphone's Type-C interface, and connect the other end to the computer, as shown in the diagram below.
2. Keep the sound source and the microphone pickup area at a distance of 15-20cm (5.9-7.5 inches).

2. Microphone Function Operation

Pickup Mute, Adjustment Light Effect Adjustment.

Power on the microphone for a colorful pickup rhythm light effect. Repeat as needed.

1. Microphone Installation Operation

1. Insert the included USB cable, insert the Type-C connector into the microphone's Type-C interface, and connect the other end to the computer, as shown in the diagram below.
2. Keep the sound source and the microphone pickup area at a distance of 15-20cm (5.9-7.5 inches).

2. Microphone Function Operation

Pickup Mute, Adjustment Light Effect Adjustment.

Power on the microphone for a colorful pickup rhythm light effect. Repeat as needed.

1. Microphone Installation Operation

1. Insert the included USB cable, insert the Type-C connector into the microphone's Type-C interface, and connect the other end to the computer, as shown in the diagram below.
2. Keep the sound source and the microphone pickup area at a distance of 15-20cm (5.9-7.5 inches).

2. Microphone Function Operation

Pickup Mute, Adjustment Light Effect Adjustment.

Power on the microphone for a colorful pickup rhythm light effect. Repeat as needed.

1. Microphone Installation Operation

1. Insert the included USB cable, insert the Type-C connector into the microphone's Type-C interface, and connect the other end to the computer, as shown in the diagram below.
2. Keep the sound source and the microphone pickup area at a distance of 15-20cm (5.9-7.5 inches).

2. Microphone Function Operation

Pickup Mute, Adjustment Light Effect Adjustment.

Power on the microphone for a colorful pickup rhythm light effect. Repeat as needed.

1. Microphone Installation Operation

1. Insert the included USB cable, insert the Type-C connector into the microphone's Type-C interface, and connect the other end to the computer, as shown in the diagram below.
2. Keep the sound source and the microphone pickup area at a distance of 15-20cm (5.9-7.5 inches).

2. Microphone Function Operation

Pickup Mute, Adjustment Light Effect Adjustment.

Power on the microphone for a colorful pickup rhythm light effect. Repeat as needed.

Поддержка операционных систем

PC, Mac, iOS with OTG adapter, Android

Микрофон GM211

Размеры устройства

| Эксплуатационные технические характеристики | Параметры измерения | Технические характеристики выхода усилителя сигнала аудио | Параметры измерения |
|---|---------------------------------|---|---|
| Тип диафрагмы | Cardioid | SNR (отношение сигнал-шум по напряжению) | >10dB |
| Компартмент диафрагмы | 1x14mm Capacitive Membrane Core | Уровень общей гармонической искаженности | <0.5% (1kHz) |
| Диапазон частот | 20Hz-20kHz | Мощность выходной мощности | 50 мВт |
| Чувствительность | -42dB±2dB (at 1kHz) | Коэффициент нелинейных искажений (КНИ) | <0.5% (1kHz) |
| Отношение сигнал/шум | >50dB | Скорость дискретизации | 48 кГц |
| Максимальное звуковое давление | 120 дБ (1 кГц) | Скорость декодирования для мониторинга аудиосигнала | 48 кГц |
| Скорость дискретизации при записи | 16 бит / 24 бита | Скорость декодирования для мониторинга аудиосигнала | 48 кГц |
| Скорость дискретизации при воспроизведении | 16 бит / 24 бита | Скорость декодирования для мониторинга аудиосигнала | 48 кГц |
| Другие характеристики: | | | |
| Питание и подключение | USB-C, 5V 100mA | Интерфейс передачи данных | USB 2.0, Type-C |
| Размеры (длина x ширина x высота) | 88 x 106 x 116,5 мм | Вес нетто | 385 г |
| Эффекты динамической подсветки | Да/Нет | Адаптер для рукоятки с регулируемым углом наклона | Частотная характеристика 20 Гц - 20 кГц |

Описание функций

1. Поддерживает частоту дискретизации аудиосигнала до 24 бит и частоту выводов 48000 Гц.
2. Поддерживает частоту дискретизации аудиосигнала до 24 бит и частоту выводов 48000 Гц.
3. Поддерживает частоту дискретизации аудиосигнала до 24 бит и частоту выводов 48000 Гц.
4. Поддерживает частоту дискретизации аудиосигнала до 24 бит и частоту выводов 48000 Гц.

1. Установка и подключение микрофона

1. Вставьте прилагаемый кабель USB-кабеля, вставьте разъем Type-C на интерфейс Type-C микрофона и подключите другой конец к компьютеру, как показано на схеме ниже.
2. Расположите источник звука на расстоянии 15–20 см от зоны приема микрофона.

2. Управление микрофоном

Подавление шума, регулировка громкости, эффекты.

Включите микрофон, чтобы начать запись звука. Нажмите кнопку включения/выключения звука, чтобы выключить звук. Звук выключен, подсветка красная; звук включен, разноцветная подсветка.

1. Microphone Installation Operation

1. Insert the included USB cable, insert the Type-C connector into the microphone's Type-C interface, and connect the other end to the computer, as shown in the diagram below.
2. Keep the sound source and the microphone pickup area at a distance of 15-20cm (5.9-7.5 inches).

2. Microphone Function Operation

Pickup Mute, Adjustment Light Effect Adjustment.

Power on the microphone for a colorful pickup rhythm light effect. Repeat as needed.

1. Microphone Installation Operation

1. Insert the included USB cable, insert the Type-C connector into the microphone's Type-C interface, and connect the other end to the computer, as shown in the diagram below.
2. Keep the sound source and the microphone pickup area at a distance of 15-20cm (5.9-7.5 inches).

2. Microphone Function Operation

Pickup Mute, Adjustment Light Effect Adjustment.

Power on the microphone for a colorful pickup rhythm light effect. Repeat as needed.

1. Microphone Installation Operation

1. Insert the included USB cable, insert the Type-C connector into the microphone's Type-C interface, and connect the other end to the computer, as shown in the diagram below.
2. Keep the sound source and the microphone pickup area at a distance of 15-20cm (5.9-7.5 inches).

2. Microphone Function Operation

Pickup Mute, Adjustment Light Effect Adjustment.

Power on the microphone for a colorful pickup rhythm light effect. Repeat as needed.

1. Microphone Installation Operation

1. Insert the included USB cable, insert the Type-C connector into the microphone's Type-C interface, and connect the other end to the computer, as shown in the diagram below.
2. Keep the sound source and the microphone pickup area at a distance of 15-20cm (5.9-7.5 inches).

2. Microphone Function Operation

Pickup Mute, Adjustment Light Effect Adjustment.

Power on the microphone for a colorful pickup rhythm light effect. Repeat as needed.

1. Microphone Installation Operation

1. Insert the included USB cable, insert the Type-C connector into the microphone's Type-C interface, and connect the other end to the computer, as shown in the diagram below.
2. Keep the sound source and the microphone pickup area at a distance of 15-20cm (5.9-7.5 inches).

2. Microphone Function Operation

Pickup Mute, Adjustment Light Effect Adjustment.

Power on the microphone for a colorful pickup rhythm light effect. Repeat as needed.

1. Microphone Installation Operation

1. Insert the included USB cable, insert the Type-C connector into the microphone's Type-C interface, and connect the other end to the computer, as shown in the diagram below.
2. Keep the sound source and the microphone pickup area at a distance of 15-20cm (5.9-7.5 inches).

2. Microphone Function Operation

Pickup Mute, Adjustment Light Effect Adjustment.

Power on the microphone for a colorful pickup rhythm light effect. Repeat as needed.

Soporte técnico

PC, Mac, iOS with OTG adapter, Android

Micrófono GM211

Tamaño del producto

| Especificaciones técnicas de captação | Parâmetros de medição | Especificações técnicas de saída de amplificação de linha de áudio | Parâmetros de medição |
|--|---------------------------------|--|--|
| Padrão de captação | Cardioid | Relação sinal-ruído (na forma de tensão) | >10 dB |
| Compartmento do diafragma | 1x14mm Capacitive Membrane Core | Nível de distorção harmônica total | <0.5% (1kHz) |
| Resposta de frequência de captação | 20Hz-20kHz | Resposta de frequência | 20Hz-20kHz |
| Sensibilidade | -42dB±2dB (at 1kHz) | Distorsão harmônica total | <0.5% (1kHz) |
| Relação sinal-ruído | >50dB | Taxa de amostragem | 48kHz |
| Nível máximo de pressão sonora | 120dB (1kHz) | Taxa de amostragem de decodificação para monitoramento de áudio | 48kHz |
| Taxa de amostragem de captação | 16 bits / 24 bits | Taxa de amostragem de decodificação para monitoramento de áudio | 48kHz |
| Taxa de amostragem de saída | 16 bits / 24 bits | Taxa de amostragem de decodificação para monitoramento de áudio | 48kHz |
| Outras especificações: | | | |
| Alimentação e conexão | USB-C, 5V 100mA | Interface de comunicação de dados | USB 2.0, Type-C |
| Dimensões (Comprimento x Largura x Altura) | 88 x 106 x 116,5mm | Peso líquido | 385g |
| Efeitos de iluminação com LEDs | Sim/Não | Adaptador de cabo para suporte de braço articulado | Resposta de frequência de 20 Hz a 20 kHz |

Estrutura de las funciones

1. Mantenga la fuente de sonido y el área de captación del microfono a una distancia de 15 a 20 cm (5.9 a 7.5 pulgadas).
2. Mantenga la fuente de sonido y el área de captación del microfono a una distancia de 15 a 20 cm (5.9 a 7.5 pulgadas).
3. Mantenga la fuente de sonido y el área de captación del microfono a una distancia de 15 a 20 cm (5.9 a 7.5 pulgadas).
4. Mantenga la fuente de sonido y el área de captación del microfono a una distancia de 15 a 20 cm (5.9 a 7.5 pulgadas).

1. Operación de instalación del microfono

1. Con el cable USB incluido, inserte el conector Type-C en la interfaz Type-C del microfono y conecte el otro extremo a la PC, como se muestra en el diagrama siguiente.
2. Mantenga la fuente de sonido y el área de captación del microfono a una distancia de 15 a 20 cm (5.9 a 7.5 pulgadas).

2. Operación de las funciones del microfono

Captação Mute, Ajuste Efeito de Luz.

Ligue o microfone para obter um ritmo colorido. Pressione o botão de silenciamento/luz para silenciar/ativar o silêncio. Silenciado luz negra, não silenciado luz colorida.

1. Microphone Installation Operation

1. Insert the included USB cable, insert the Type-C connector into the microphone's Type-C interface, and connect the other end to the computer, as shown in the diagram below.
2. Keep the sound source and the microphone pickup area at a distance of 15-20cm (5.9-7.5 inches).

2. Microphone Function Operation

Pickup Mute, Adjustment Light Effect Adjustment.

Power on the microphone for a colorful pickup rhythm light effect. Repeat as needed.

1. Microphone Installation Operation

1. Insert the included USB cable, insert the Type-C connector into the microphone's Type-C interface, and connect the other end to the computer, as shown in the diagram below.
2. Keep the sound source and the microphone pickup area at a distance of 15-20cm (5.9-7.5 inches).

2. Microphone Function Operation

Pickup Mute, Adjustment Light Effect Adjustment.

Power on the microphone for a colorful pickup rhythm light effect. Repeat as needed.

1. Microphone Installation Operation

1. Insert the included USB cable, insert the Type-C connector into the microphone's Type-C interface, and connect the other end to the computer, as shown in the diagram below.
2. Keep the sound source and the microphone pickup area at a distance of 15-20cm (5.9-7.5 inches).

2. Microphone Function Operation

Pickup Mute, Adjustment Light Effect Adjustment.

Power on the microphone for a colorful pickup rhythm light effect. Repeat as needed.

1. Microphone Installation Operation

1. Insert the included USB cable, insert the Type-C connector into the microphone's Type-C interface, and connect the other end to the computer, as shown in the diagram below.
2. Keep the sound source and the microphone pickup area at a distance of 15-20cm (5.9-7.5 inches).

2. Microphone Function Operation

Pickup Mute, Adjustment Light Effect Adjustment.

Power on the microphone for a colorful pickup rhythm light effect. Repeat as needed.

1. Microphone Installation Operation

1. Insert the included USB cable, insert the Type-C connector into the microphone's Type-C interface, and connect the other end to the computer, as shown in the diagram below.
2. Keep the sound source and the microphone pickup area at a distance of 15-20cm (5.9-7.5 inches).

2. Microphone Function Operation

Pickup Mute, Adjustment Light Effect Adjustment.

Power on the microphone for a colorful pickup rhythm light effect. Repeat as needed.

1. Microphone Installation Operation

1. Insert the included USB cable, insert the Type-C connector into the microphone's Type-C interface, and connect the other end to the computer, as shown in the diagram below.
2. Keep the sound source and the microphone pickup area at a distance of 15-20cm (5.9-7.5 inches).

2. Microphone Function Operation

Pickup Mute, Adjustment Light Effect Adjustment.

Power on the microphone for a colorful pickup rhythm light effect. Repeat as needed.